

Arts Commission

455 N. Lamar Street, Suite 2A, Jackson, MS 39202

David Lewis

AGENCY

ADDRESS

CHIEF EXECUTIVE OFFICER

	Actual Expenses June 30,2024	Estimated Expenses June 30,2025	Requested For June 30,2026	Requested Over/(Under) Estimated		
				AMOUNT	PERCENT	
I. A. PERSONAL SERVICES						
1. Salaries, Wages & Fringe Benefits (Base)	967,318	1,037,451	1,122,119			
a. Additional Compensation						
b. Proposed Vacancy Rate (Dollar Amount)						
c. Per Diem						
Total Salaries, Wages & Fringe Benefits	967,318	1,037,451	1,122,119	84,668	8.16%	
2. Travel						
a. Travel & Subsistence (In-State)	16,733	25,000	30,500	5,500	22.00%	
b. Travel & Subsistence (Out-Of-State)	12,866	30,500	25,000	(5,500)	(18.03%)	
c. Travel & Subsistence (Out-Of-Country)						
Total Travel	29,599	55,500	55,500			
B. CONTRACTUAL SERVICE S (Schedule B)						
a. Tuition, Rewards & Awards	7,812	5,000	5,000			
b. Communications, Transportation & Utilities	2,725	2,400	2,400			
c. Public Information	10,116	4,500	4,500			
d. Rents	29,762	33,000	33,000			
e. Repairs & Service						
f. Fees, Professional & Other Services	846,134	1,188,136	1,231,136	43,000	3.62%	
g. Other Contractual Services	71,159	51,000	51,000			
h. Data Processing	25,904	24,300	24,300			
i. Other						
Total Contractual Services	993,612	1,308,336	1,351,336	43,000	3.29%	
C. COMMODITIES (Schedule C)						
a. Maintenance & Construction Materials & Supplies	2,077	800	800			
b. Printing & Office Supplies & Materials	21,310	14,500	14,500			
c. Equipment, Repair Parts, Supplies & Accessories	3,131	5,000	5,000			
d. Professional & Scientific Supplies & Materials	11,191	12,000	12,000			
e. Other Supplies & Materials	68,753	55,200	55,200			
Total Commodities	106,462	87,500	87,500			
D. CAPITAL OUTLAY						
1. Total Other Than Equipment (Schedule D-1)						
2. Equipment (Schedule D-2)						
b. Road Machinery, Farm & Other Working Equipment						
c. Office Machines, Furniture, Fixtures & Equipment	13,625	13,000	13,000			
d. IS Equipment (Data Processing & Telecommunications)	25,159	17,000	17,000			
e. Equipment - Lease Purchase						
f. Other Equipment						
Total Equipment (Schedule D-2)	38,784	30,000	30,000			
3. Vehicles (Schedule D-3)						
4. Wireless Comm. Devices (Schedule D-4)						
E. SUBSIDIES, LOANS & GRANTS (Schedule E)	5,851,141	8,624,790	8,365,090	(259,700)	(3.01%)	
TOTAL EXPENDITURES	7,986,916	11,143,577	11,011,545	(132,032)	(1.18%)	
II. BUDGET TO BE FUNDED AS FOLLOWS:						
Cash Balance-Unencumbered	10,500	49,864	9,364	(40,500)	(81.22%)	
General Fund Appropriation (Enter General Fund Lapse Below)	1,528,431	1,555,682	2,021,545	465,863	29.95%	
State Support Special Funds	5,393,349	8,387,895	7,790,000	(597,895)	(7.13%)	
Federal Funds _____ Other Special Funds (Specify) _____	1,054,500	1,059,500	1,100,000	40,500	3.82%	
Whole Schools Special Fund	50,000	100,000	100,000			
Less: Estimated Cash Available Next Fiscal Period	(49,864)	(9,364)	(9,364)			
TOTAL FUNDS (equals Total Expenditures above)	7,986,916	11,143,577	11,011,545	(132,032)	(1.18%)	
GENERAL FUND LAPSE						
III: PERSONNEL DATA						
Number of Positions Authorized in Appropriation Bill	a.) Perm Full	10	10	11	1	10.00%
	b.) Perm Part					
	c.) T-L Full	2	2	2		
	d.) T-L Part					
Average Annual Vacancy Rate (Percentage)	a.) Perm Full	6.00	3.00	3.00		
	b.) Perm Part					
	c.) T-L Full					
	d.) T-L Part					

Approved by: David Lewis

Submitted by: Timothy Davis

Date: 7/31/2024 2:39 PM

Official of Board or Commission

Budget Officer: Larry Morrisey / lmorrisey@arts.ms.gov

Phone Number: 601-359-6036

Title: Finance Director

REQUEST BY FUNDING SOURCE

Name of Agency : Arts Commission

Specify Funding Sources As Shown Below	FY 2024 Actual Amount	% of Line Item	% of Total Budget	FY 2025 Estimated Amount	% of Line Item	% of Total Budget	FY 2026 Requested Amount	% of Line Item	% of Total Budget
1. General _____ State Support Special (Specify) _____	836,888	86.52%		883,951	85.20%		968,619	86.32%	
2. Education Enhancement Fund	130,430	13.48%		153,500	14.80%		153,500	13.68%	
3. Health Care Expendable Fund									
4. Tobacco Control Fund									
5. Capital Expense Fund									
6. Working Cash Stabilization Reserve Fund									
7. BP Settlement Fund									
8. Gulf Coast Restoration Fund									
9. Coronavirus Local Fiscal Recovery Fund									
10. Coronavirus State Fiscal Recovery Fund									
11. Coronavirus State Fiscal Recovery Lost Revenue Fund									
12. MS Assoc of Ind Colleges and Univ (MAICU) Fund									
13. Federal _____ Other Special (Specify) _____									
14. Whole Schools Special Fund									
15.									
16.									
17.									
Total Salaries	967,318		12.11%	1,037,451		9.31%	1,122,119		10.19%
1. General _____ State Support Special (Specify) _____	21,789	73.61%		49,500	89.19%		49,500	89.19%	
2. Education Enhancement Fund	7,810	26.39%		6,000	10.81%		6,000	10.81%	
3. Health Care Expendable Fund									
4. Tobacco Control Fund									
5. Capital Expense Fund									
6. Working Cash Stabilization Reserve Fund									
7. BP Settlement Fund									
8. Gulf Coast Restoration Fund									
9. Coronavirus Local Fiscal Recovery Fund									
10. Coronavirus State Fiscal Recovery Fund									
11. Coronavirus State Fiscal Recovery Lost Revenue Fund									
12. MS Assoc of Ind Colleges and Univ (MAICU) Fund									
13. Federal _____ Other Special (Specify) _____									
14. Whole Schools Special Fund									
15.									
16.									
17.									
Total Travel	29,599		0.37%	55,500		0.50%	55,500		0.50%
1. General _____ State Support Special (Specify) _____	172,795	17.39%		128,520	9.82%		178,520	13.21%	
2. Education Enhancement Fund	697,817	70.23%		808,498	61.80%		808,498	59.83%	
3. Health Care Expendable Fund									
4. Tobacco Control Fund									
5. Capital Expense Fund				70,000	5.35%		63,000	4.66%	
6. Working Cash Stabilization Reserve Fund									
7. BP Settlement Fund									
8. Gulf Coast Restoration Fund									
9. Coronavirus Local Fiscal Recovery Fund									
10. Coronavirus State Fiscal Recovery Fund									
11. Coronavirus State Fiscal Recovery Lost Revenue Fund									
12. MS Assoc of Ind Colleges and Univ (MAICU) Fund									
13. Federal _____ Other Special (Specify) _____	78,869	7.94%		201,318	15.39%		201,318	14.90%	
14. Whole Schools Special Fund	44,131	4.44%		100,000	7.64%		100,000	7.40%	
15.									
16.									
17.									
Total Contractual	993,612		12.44%	1,308,336		11.74%	1,351,336		12.27%

REQUEST BY FUNDING SOURCE

Name of Agency : Arts Commission

Specify Funding Sources As Shown Below	FY 2024 Actual Amount	% of Line Item	% of Total Budget	FY 2025 Estimated Amount	% of Line Item	% of Total Budget	FY 2026 Requested Amount	% of Line Item	% of Total Budget
1. General _____ State Support Special (Specify) _____	20,219	18.99%		37,500	42.86%		37,500	42.86%	
2. Education Enhancement Fund	75,747	71.15%		50,000	57.14%		50,000	57.14%	
3. Health Care Expendable Fund									
4. Tobacco Control Fund									
5. Capital Expense Fund									
6. Working Cash Stabilization Reserve Fund									
7. BP Settlement Fund									
8. Gulf Coast Restoration Fund									
9. Coronavirus Local Fiscal Recovery Fund									
10. Coronavirus State Fiscal Recovery Fund									
11. Coronavirus State Fiscal Recovery Lost Revenue Fund									
12. MS Assoc of Ind Colleges and Univ (MAICU) Fund									
13. Federal _____ Other Special (Specify) _____	4,627	4.35%							
14. Whole Schools Special Fund	5,869	5.51%							
15.									
16.									
17.									
Total Commodities	106,462		1.33%	87,500		0.79%	87,500		0.79%
1. General _____ State Support Special (Specify) _____									
2. Education Enhancement Fund									
3. Health Care Expendable Fund									
4. Tobacco Control Fund									
5. Capital Expense Fund									
6. Working Cash Stabilization Reserve Fund									
7. BP Settlement Fund									
8. Gulf Coast Restoration Fund									
9. Coronavirus Local Fiscal Recovery Fund									
10. Coronavirus State Fiscal Recovery Fund									
11. Coronavirus State Fiscal Recovery Lost Revenue Fund									
12. MS Assoc of Ind Colleges and Univ (MAICU) Fund									
13. Federal _____ Other Special (Specify) _____									
14. Whole Schools Special Fund									
15.									
16.									
17.									
Total Capital Other Than Equipment									
1. General _____ State Support Special (Specify) _____	10,626	27.40%		30,000	100.00		30,000	100.00	
2. Education Enhancement Fund	28,158	72.60%							
3. Health Care Expendable Fund									
4. Tobacco Control Fund									
5. Capital Expense Fund									
6. Working Cash Stabilization Reserve Fund									
7. BP Settlement Fund									
8. Gulf Coast Restoration Fund									
9. Coronavirus Local Fiscal Recovery Fund									
10. Coronavirus State Fiscal Recovery Fund									
11. Coronavirus State Fiscal Recovery Lost Revenue Fund									
12. MS Assoc of Ind Colleges and Univ (MAICU) Fund									
13. Federal _____ Other Special (Specify) _____									
14. Whole Schools Special Fund									
15.									
16.									
17.									
Total Capital Equipment	38,784		0.49%	30,000		0.27%	30,000		0.27%

REQUEST BY FUNDING SOURCE

Name of Agency : Arts Commission

Specify Funding Sources As Shown Below	FY 2024 Actual Amount	% of Line Item	% of Total Budget	FY 2025 Estimated Amount	% of Line Item	% of Total Budget	FY 2026 Requested Amount	% of Line Item	% of Total Budget
1. General _____ State Support Special (Specify) _____									
2. Education Enhancement Fund									
3. Health Care Expendable Fund									
4. Tobacco Control Fund									
5. Capital Expense Fund									
6. Working Cash Stabilization Reserve Fund									
7. BP Settlement Fund									
8. Gulf Coast Restoration Fund									
9. Coronavirus Local Fiscal Recovery Fund									
10. Coronavirus State Fiscal Recovery Fund									
11. Coronavirus State Fiscal Recovery Lost Revenue Fund									
12. MS Assoc of Ind Colleges and Univ (MAICU) Fund									
13. Federal _____ Other Special (Specify) _____									
14. Whole Schools Special Fund									
15.									
16.									
17.									
Total Vehicles									
1. General _____ State Support Special (Specify) _____									
2. Education Enhancement Fund									
3. Health Care Expendable Fund									
4. Tobacco Control Fund									
5. Capital Expense Fund									
6. Working Cash Stabilization Reserve Fund									
7. BP Settlement Fund									
8. Gulf Coast Restoration Fund									
9. Coronavirus Local Fiscal Recovery Fund									
10. Coronavirus State Fiscal Recovery Fund									
11. Coronavirus State Fiscal Recovery Lost Revenue Fund									
12. MS Assoc of Ind Colleges and Univ (MAICU) Fund									
13. Federal _____ Other Special (Specify) _____									
14. Whole Schools Special Fund									
15.									
16.									
17.									
Total Wireless Communication Devs.									
1. General _____ State Support Special (Specify) _____	466,114	7.97%		426,211	4.94%		757,406	9.05%	
2. Education Enhancement Fund	373,910	6.39%		472,002	5.47%		472,002	5.64%	
3. Health Care Expendable Fund									
4. Tobacco Control Fund									
5. Capital Expense Fund	4,079,477	69.72%		6,827,895	79.17%		6,237,000	74.56%	
6. Working Cash Stabilization Reserve Fund									
7. BP Settlement Fund									
8. Gulf Coast Restoration Fund									
9. Coronavirus Local Fiscal Recovery Fund									
10. Coronavirus State Fiscal Recovery Fund									
11. Coronavirus State Fiscal Recovery Lost Revenue Fund									
12. MS Assoc of Ind Colleges and Univ (MAICU) Fund									
13. Federal _____ Other Special (Specify) _____	931,640	15.92%		898,682	10.42%		898,682	10.74%	
14. Whole Schools Special Fund									
15.									
16.									
17.									
Total Subsidies	5,851,141		73.26%	8,624,790		77.40%	8,365,090		75.97%

REQUEST BY FUNDING SOURCE

Name of Agency : Arts Commission

Specify Funding Sources As Shown Below	FY 2024 Actual Amount	% of Line Item	% of Total Budget	FY 2025 Estimated Amount	% of Line Item	% of Total Budget	FY 2026 Requested Amount	% of Line Item	% of Total Budget
1. General _____ State Support Special (Specify) _____	1,528,431	19.14%		1,555,682	13.96%		2,021,545	18.36%	
2. Education Enhancement Fund	1,313,872	16.45%		1,490,000	13.37%		1,490,000	13.53%	
3. Health Care Expendable Fund									
4. Tobacco Control Fund									
5. Capital Expense Fund	4,079,477	51.08%		6,897,895	61.90%		6,300,000	57.21%	
6. Working Cash Stabilization Reserve Fund									
7. BP Settlement Fund									
8. Gulf Coast Restoration Fund									
9. Coronavirus Local Fiscal Recovery Fund									
10. Coronavirus State Fiscal Recovery Fund									
11. Coronavirus State Fiscal Recovery Lost Revenue Fund									
12. MS Assoc of Ind Colleges and Univ (MAICU) Fund									
13. Federal _____ Other Special (Specify) _____	1,015,136	12.71%		1,100,000	9.87%		1,100,000	9.99%	
14. Whole Schools Special Fund	50,000	0.63%		100,000	0.90%		100,000	0.91%	
15.									
16.									
17.									
TOTAL	7,986,916		100.00%	11,143,577		100.00%	11,011,545		100.00%

SPECIAL FUNDS DETAIL

Arts Commission (865-00)

Name of Agency

S. STATE SUPPORT SPECIAL FUNDS		(1) Actual Revenues FY 2024	(2) Estimated Revenues FY 2025	(3) Requested Revenues FY 2026
Source (Fund Number)	Detailed Description of Source			
Education Enhancement Fund (4410800000)	EEF - Education Enhancement Fund	1,313,872	1,490,000	1,490,000
Health Care Expendable Fund	HCEF - Health Care Expendable Fund			
Tobacco Control Fund	TCF - Tobacco Control Fund			
Capital Expense Fund (6493400000)	CEF - Capital Expense Fund	4,079,477	6,897,895	6,300,000
Working Cash Stabilization Reserve Fund	WCSRF - Working Cash Stabilization Reserve Fund			
BP Settlement Fund	BPSF - BP Settlement Fund			
Gulf Coast Restoration Fund	GCRF - Gulf Coast Restoration Fund			
Coronavirus Local Fiscal Recovery Fund	CLFRF - Coronavirus Local Fiscal Recovery Fund			
Coronavirus State Fiscal Recovery Fund	CSFRF - Coronavirus State Fiscal Recovery Fund			
Coronavirus State Fiscal Recovery Lost Revenue Fund	CLFRLRF - Coronavirus State Fiscal Recovery Lost Revenue Fund			
MS Assoc of Ind Colleges and Univ (MAICU) Fund	MAICUF - MS Assoc of Independent Colleges and Universities Fund			
State Support Special Fund TOTAL		5,393,349	8,387,895	7,790,000
STATE SUPPORT SPECIAL FUND LAPSE		176,128		

A. FEDERAL FUNDS *		Percentage Match Requirement		(1) Actual Revenues FY 2024	(2) Estimated Revenues FY 2025	(3) Requested Revenues FY 2026
Source (Fund Number)	Detailed Description of Source	FY 2025	FY 2026			
	Cash Balance-Unencumbered			10,500	49,864	9,364
Federal Arts Grant (538650000)		100.00	100.00	1,054,500	1,059,500	1,100,000
Federal Fund TOTAL				1,065,000	1,109,364	1,109,364

B. OTHER SPECIAL FUNDS (NON-FED'L)		(1) Actual Revenues FY 2024	(2) Estimated Revenues FY 2025	(3) Requested Revenues FY 2026
Source (Fund Number)	Detailed Description of Source			
	Cash Balance-Unencumbered			
Whole Schools Special Fund (3386500000)	Hardin Foundation	50,000	100,000	100,000
Other Special Fund TOTAL		50,000	100,000	100,000

SECTIONS S + A + B TOTAL		6,508,349	9,597,259	8,999,364
---------------------------------	--	------------------	------------------	------------------

C. TREASURY FUND/BANK ACCOUNTS *	Fund/Account Number	Name of Bank (If Applicable)	(1) Reconciled Balance as of 6/30/24	(2) Balance as of 6/30/25	(3) Balance as of 6/30/26
Name of Fund/Account					

* Any non-federal funds that have restricted uses must be identified and narrative of restrictions attached.

**NARRATIVE OF SPECIAL FUNDS DETAIL AND TREASURY
FUND/BANK ACCOUNTS**

Arts Commission (865-00)

Name of Agency

STATE SUPPORT SPECIAL FUNDS

The Arts Commission requests continued funding of \$1,490,000 in Education Enhancement Funds for the agency's arts education initiatives and grants. This includes \$1,040,000 to support MAC's Mississippi Whole Schools, a program that helps schools adapt an arts-integrated approach in their classrooms. The remaining amount will fund grants focused on arts education, community development and grants to individual artists for professional development.

MAC is also requesting an increase of \$2.8 million in Capital Expense funds over the agency's FY24 appropriation, for a total of \$6.3 million for FY26. This will continue funding for the Building Fund for the Arts grant program (BFA). BFA provides funding to organizations with arts-based facilities to allow them to make repairs or renovations. The grant requires matching funds. An organization must show proof that they have raised their match before MAC disperses funding.

For FY2024, MAC received \$5,000,000 in new Capital Expense funds and was approved to re-appropriate \$1,700,000 in FY2023 CEF to close out grants made in the prior year. During FY2024, MAC paid \$4,080,000 to BFA grantees from FY24 and FY23 funds. For FY2025, MAC was approved for \$3,500,000 in re-appropriated funds. For FY2026, MAC is requesting a re-appropriation of \$1.75 million of its FY25 CE funds. MAC paid out approximately half of the FY2024 CEF funds during FY2024. Therefore, the agency is asking for a re-appropriation of half of the awarded FY2025 CE funds. The FY25 grants will be awarded in November 2024. Based on the past two years of the program, half of the funded projects are not complete by the end of the fiscal year.

FEDERAL FUNDS

MAC receives an annual grant from the National Endowment for the Arts (NEA), a federal agency. The agency will submit the application for its Fiscal Year 2026 grant in late September 2024. The NEA announces grant awards in May, with funds available starting July 1st. MAC uses this grant to support its grant programs and special initiatives, including the Poetry Out Loud student poetry recitation contest. The estimated grant amount for FY26 is based on current year funding with a small amount for carryover federal funds from the prior fiscal year.

OTHER SPECIAL FUNDS

MAC estimates to spend \$100,000 in Other Special Funds to support the Mississippi Whole Schools initiative. The funds come from a grant from the Hardin Foundation in Meridian as well as funds earned by the program through event registration fees. The funds support the program's twice-annual teacher training conferences.

TREASURY FUND / BANK

N/A

CONTINUATION AND EXPANDED TOTAL REQUEST

Arts Commission (865-00)

SUMMARY OF ALL PROGRAMS

Name of Agency	FY 2024 Actual					Program
	(1) General	(2) State Support Special	(3) Federal	(4) Other Special	(5) Total	
Salaries,Wages & Fringe	836,888	130,430			967,318	
Travel	21,789	7,810			29,599	
Contractual Services	172,795	697,817	78,869	44,131	993,612	
Commodities	20,219	75,747	4,627	5,869	106,462	
Other Than Equipment						
Equipment	10,626	28,158			38,784	
Vehicles						
Wireless Communication Devices						
Subsidies, Loans & Grants	466,114	4,453,387	931,640		5,851,141	
Total	1,528,431	5,393,349	1,015,136	50,000	7,986,916	
No. of Positions (FTE)	2.37	8.06	1.53	0.04	12.00	

	FY 2025 Estimated					
	(6) General	(7) State Support Special	(8) Federal	(9) Other Special	(10) Total	
Salaries,Wages & Fringe	883,951	153,500			1,037,451	
Travel	49,500	6,000			55,500	
Contractual Services	128,520	878,498	201,318	100,000	1,308,336	
Commodities	37,500	50,000			87,500	
Other Than Equipment						
Equipment	30,000				30,000	
Vehicles						
Wireless Communication Devices						
Subsidies, Loans & Grants	426,211	7,299,897	898,682		8,624,790	
Total	1,555,682	8,387,895	1,100,000	100,000	11,143,577	
No. of Positions (FTE)	1.68	8.99	1.25	0.08	12.00	

	FY 2026 Increase/Decrease for Continuation					
	(11) General	(12) State Support Special	(13) Federal	(14) Other Special	(15) Total	
Salaries,Wages & Fringe						
Travel						
Contractual Services						
Commodities						
Other Than Equipment						
Equipment						
Vehicles						
Wireless Communication Devices						
Subsidies, Loans & Grants						
Total						
No. of Positions (FTE)						

Note: FY2026 Total Request = FY2025 Estimated + FY2026 Incr(Decr) for Continuation + FY2026 Expansion/Reduction of Existing Activities + FY2026 New Activities.

CONTINUATION AND EXPANDED TOTAL REQUEST

Arts Commission (865-00)

SUMMARY OF ALL PROGRAMS

Name of Agency	Program				
	FY 2026 Expansion/Reduction of Existing Activities				
	(16) General	(17) State Support Special	(18) Federal	(19) Other Special	(20) Total
Salaries,Wages & Fringe	84,668				84,668
Travel					
Contractual Services	50,000	(7,000)			43,000
Commodities					
Other Than Equipment					
Equipment					
Vehicles					
Wireless Communication Devices					
Subsidies, Loans & Grants	331,195	2,807,000			3,138,195
Total	465,863	2,800,000			3,265,863
No. of Positions (FTE)					

	FY 2026 New Activities (*)				
	(21) General	(22) State Support Special	(23) Federal	(24) Other Special	(25) Total
Salaries,Wages & Fringe					
Travel					
Contractual Services					
Commodities					
Other Than Equipment					
Equipment					
Vehicles					
Wireless Communication Devices					
Subsidies, Loans & Grants					
Total					
No. of Positions (FTE)					

	FY 2026 Total Request				
	(26) General	(27) State Support Special	(28) Federal	(29) Other Special	(30) Total
Salaries,Wages & Fringe	968,619	153,500			1,122,119
Travel	49,500	6,000			55,500
Contractual Services	178,520	871,498	201,318	100,000	1,351,336
Commodities	37,500	50,000			87,500
Other Than Equipment					
Equipment	30,000				30,000
Vehicles					
Wireless Communication Devices					
Subsidies, Loans & Grants	757,406	6,709,002	898,682		8,365,090
Total	2,021,545	7,790,000	1,100,000	100,000	11,011,545
No. of Positions (FTE)	1.68	8.99	1.25	0.08	12.00

Note: FY2026 Total Request = FY2025 Estimated + FY2026 Incr(Decr) for Continuation + FY2026 Expansion/Reduction of Existing Activities + FY2026 New Activities.

SUMMARY OF PROGRAMS
FORM MBR-1-03sum

Arts Commission (865-00)

Name of Agency

FUNDING REQUESTED FISCAL YEAR 2026

	PROGRAM	GENERAL	ST. SUPP. SPECIAL	FEDERAL	OTHER SPECIAL	TOTAL
1.	Grants	1,617,236	6,232,000	880,000	80,000	8,809,236
2.	Information & Technical Assistance	404,309	1,558,000	220,000	20,000	2,202,309
	Summary of All Programs	2,021,545	7,790,000	1,100,000	100,000	11,011,545

CONTINUATION AND EXPANDED REQUEST

Program 1 of 2

Arts Commission (865-00)

Grants

Name of Agency	FY 2024 Actual				
	(1) General	(2) State Support Special	(3) Federal	(4) Other Special	(5) Total
Salaries,Wages & Fringe	669,510	104,344			773,854
Travel	17,431	6,248			23,679
Contractual Services	138,236	558,254	63,095	35,305	794,890
Commodities	16,175	60,598	3,702	4,695	85,170
Other Than Equipment					
Equipment	8,501	22,526			31,027
Vehicles					
Wireless Communication Devices					
Subsidies, Loans & Grants	372,891	3,562,710	745,312		4,680,913
Total	1,222,744	4,314,680	812,109	40,000	6,389,533
No. of Positions (FTE)	1.89	6.40	1.20	0.01	9.50

	FY 2025 Estimated				
	(6) General	(7) State Support Special	(8) Federal	(9) Other Special	(10) Total
Salaries,Wages & Fringe	707,161	122,800			829,961
Travel	39,600	4,800			44,400
Contractual Services	102,816	702,798	161,054	80,000	1,046,668
Commodities	30,000	40,000			70,000
Other Than Equipment					
Equipment	24,000				24,000
Vehicles					
Wireless Communication Devices					
Subsidies, Loans & Grants	340,969	5,839,918	718,946		6,899,833
Total	1,244,546	6,710,316	880,000	80,000	8,914,862
No. of Positions (FTE)	1.33	7.13	1.00	0.04	9.50

	FY 2026 Increase/Decrease for Continuation				
	(11) General	(12) State Support Special	(13) Federal	(14) Other Special	(15) Total
Salaries,Wages & Fringe					
Travel					
Contractual Services					
Commodities					
Other Than Equipment					
Equipment					
Vehicles					
Wireless Communication Devices					
Subsidies, Loans & Grants					
Total					
No. of Positions (FTE)					

Note: FY2026 Total Request = FY2025 Estimated + FY2026 Incr(Decr) for Continuation + FY2026 Expansion/Reduction of Existing Activities + FY2026 New Activities.

CONTINUATION AND EXPANDED REQUEST

Arts Commission (865-00)

Grants

Name of Agency	FY 2026 Expansion/Reduction of Existing Activities				
	(16) General	(17) State Support Special	(18) Federal	(19) Other Special	(20) Total
Salaries,Wages & Fringe	67,734				67,734
Travel					
Contractual Services	40,000	(5,600)			34,400
Commodities					
Other Than Equipment					
Equipment					
Vehicles					
Wireless Communication Devices					
Subsidies, Loans & Grants	264,956	2,245,600			2,510,556
Total	372,690	2,240,000			2,612,690
No. of Positions (FTE)					

	FY 2026 New Activities (*)				
	(21) General	(22) State Support Special	(23) Federal	(24) Other Special	(25) Total
Salaries,Wages & Fringe					
Travel					
Contractual Services					
Commodities					
Other Than Equipment					
Equipment					
Vehicles					
Wireless Communication Devices					
Subsidies, Loans & Grants					
Total					
No. of Positions (FTE)					

	FY 2026 Total Request				
	(26) General	(27) State Support Special	(28) Federal	(29) Other Special	(30) Total
Salaries,Wages & Fringe	774,895	122,800			897,695
Travel	39,600	4,800			44,400
Contractual Services	142,816	697,198	161,054	80,000	1,081,068
Commodities	30,000	40,000			70,000
Other Than Equipment					
Equipment	24,000				24,000
Vehicles					
Wireless Communication Devices					
Subsidies, Loans & Grants	605,925	5,367,202	718,946		6,692,073
Total	1,617,236	6,232,000	880,000	80,000	8,809,236
No. of Positions (FTE)	1.33	7.13	1.00	0.04	9.50

Note: FY2026 Total Request = FY2025 Estimated + FY2026 Incr(Decr) for Continuation + FY2026 Expansion/Reduction of Existing Activities + FY2026 New Activities.

CONTINUATION AND EXPANDED REQUEST

Program 2 of 2

Arts Commission (865-00)

Information & Technical Assistance

Name of Agency	FY 2024 Actual					Program
	(1) General	(2) State Support Special	(3) Federal	(4) Other Special	(5) Total	
Salaries,Wages & Fringe	167,378	26,086			193,464	
Travel	4,358	1,562			5,920	
Contractual Services	34,559	139,563	15,774	8,826	198,722	
Commodities	4,044	15,149	925	1,174	21,292	
Other Than Equipment						
Equipment	2,125	5,632			7,757	
Vehicles						
Wireless Communication Devices						
Subsidies, Loans & Grants	93,223	890,677	186,328		1,170,228	
Total	305,687	1,078,669	203,027	10,000	1,597,383	
No. of Positions (FTE)	0.48	1.66	0.33	0.03	2.50	

	FY 2025 Estimated					
	(6) General	(7) State Support Special	(8) Federal	(9) Other Special	(10) Total	
Salaries,Wages & Fringe	176,790	30,700			207,490	
Travel	9,900	1,200			11,100	
Contractual Services	25,704	175,700	40,264	20,000	261,668	
Commodities	7,500	10,000			17,500	
Other Than Equipment						
Equipment	6,000				6,000	
Vehicles						
Wireless Communication Devices						
Subsidies, Loans & Grants	85,242	1,459,979	179,736		1,724,957	
Total	311,136	1,677,579	220,000	20,000	2,228,715	
No. of Positions (FTE)	0.35	1.86	0.25	0.04	2.50	

	FY 2026 Increase/Decrease for Continuation					
	(11) General	(12) State Support Special	(13) Federal	(14) Other Special	(15) Total	
Salaries,Wages & Fringe						
Travel						
Contractual Services						
Commodities						
Other Than Equipment						
Equipment						
Vehicles						
Wireless Communication Devices						
Subsidies, Loans & Grants						
Total						
No. of Positions (FTE)						

Note: FY2026 Total Request = FY2025 Estimated + FY2026 Incr(Decr) for Continuation + FY2026 Expansion/Reduction of Existing Activities + FY2026 New Activities.

CONTINUATION AND EXPANDED REQUEST

Arts Commission (865-00)

Information & Technical Assistance

Name of Agency

Program

	FY 2026 Expansion/Reduction of Existing Activities				
	(16) General	(17) State Support Special	(18) Federal	(19) Other Special	(20) Total
Salaries,Wages & Fringe	16,934				16,934
Travel					
Contractual Services	10,000	(1,400)			8,600
Commodities					
Other Than Equipment					
Equipment					
Vehicles					
Wireless Communication Devices					
Subsidies, Loans & Grants	66,239	561,400			627,639
Total	93,173	560,000			653,173
No. of Positions (FTE)					

	FY 2026 New Activities (*)				
	(21) General	(22) State Support Special	(23) Federal	(24) Other Special	(25) Total
Salaries,Wages & Fringe					
Travel					
Contractual Services					
Commodities					
Other Than Equipment					
Equipment					
Vehicles					
Wireless Communication Devices					
Subsidies, Loans & Grants					
Total					
No. of Positions (FTE)					

	FY 2026 Total Request				
	(26) General	(27) State Support Special	(28) Federal	(29) Other Special	(30) Total
Salaries,Wages & Fringe	193,724	30,700			224,424
Travel	9,900	1,200			11,100
Contractual Services	35,704	174,300	40,264	20,000	270,268
Commodities	7,500	10,000			17,500
Other Than Equipment					
Equipment	6,000				6,000
Vehicles					
Wireless Communication Devices					
Subsidies, Loans & Grants	151,481	1,341,800	179,736		1,673,017
Total	404,309	1,558,000	220,000	20,000	2,202,309
No. of Positions (FTE)	0.35	1.86	0.25	0.04	2.50

Note: FY2026 Total Request = FY2025 Estimated + FY2026 Incr(Decr) for Continuation + FY2026 Expansion/Reduction of Existing Activities + FY2026 New Activities.

PROGRAM DECISION UNITS

Arts Commission

1 - Grants

Name of Agency	Program Name							
	A	B	C	D	E	F	G	H
EXPENDITURES	FY 2025 Appropriated	Escalations By DFA	Non-Recurring Items	Increase for the Building Fund	Increase for grant funds	Increase in funds and salary	Increase for website redesign	Use of Capital Expense Funds
SALARIES	829,961					67,734		
GENERAL	707,161					67,734		
ST. SUP. SPECIAL	122,800							
FEDERAL								
OTHER								
TRAVEL	44,400							
GENERAL	39,600							
ST. SUP. SPECIAL	4,800							
FEDERAL								
OTHER								
CONTRACTUAL	1,046,668						40,000	22,400
GENERAL	102,816						40,000	
ST. SUP. SPECIAL	702,798							22,400
FEDERAL	161,054							
OTHER	80,000							
COMMODITIES	70,000							
GENERAL	30,000							
ST. SUP. SPECIAL	40,000							
FEDERAL								
OTHER								
CAPTITAL-OTE								
GENERAL								
ST. SUP. SPECIAL								
FEDERAL								
OTHER								
EQUIPMENT	24,000							
GENERAL	24,000							
ST. SUP. SPECIAL								
FEDERAL								
OTHER								
VEHICLES								
GENERAL								
ST. SUP. SPECIAL								
FEDERAL								
OTHER								
WIRELESS DEV								
GENERAL								
ST. SUP. SPECIAL								
FEDERAL								
OTHER								
SUBSIDIES	6,899,833		(2,718,316)	2,217,600	264,956			
GENERAL	340,969				264,956			
ST. SUP. SPECIAL	5,839,918		(2,718,316)	2,217,600				
FEDERAL	718,946							
OTHER								
TOTAL	8,914,862		(2,718,316)	2,217,600	264,956	67,734	40,000	22,400
FUNDING								
GENERAL FUNDS	1,244,546				264,956	67,734	40,000	
ST. SUP. SPCL FUNDS	6,710,316		(2,718,316)	2,217,600				22,400
FEDERAL FUNDS	880,000							
OTHER SP. FUNDS	80,000							
TOTAL	8,914,862		(2,718,316)	2,217,600	264,956	67,734	40,000	22,400
POSITIONS								
GENERAL FTE	1.33							
ST. SUP. SPCL. FTE	7.13							
FEDERAL FTE	1.00							
OTHER SP. FTE	0.04							
TOTAL	9.50							
PRIORITY LEVEL :								
				1	2	3	4	5

PROGRAM DECISION UNITS

	I	J	K	L				
EXPENDITURES	Reduction in contractual paid	Increase in grants paid	Total Funding Change	FY 2026 Total Request				
SALARIES			67,734	897,695				
GENERAL			67,734	774,895				
ST. SUP. SPECIAL				122,800				
FEDERAL								
OTHER								
TRAVEL				44,400				
GENERAL				39,600				
ST. SUP. SPECIAL				4,800				
FEDERAL								
OTHER								
CONTRACTUAL	(28,000)		34,400	1,081,068				
GENERAL			40,000	142,816				
ST. SUP. SPECIAL	(28,000)		(5,600)	697,198				
FEDERAL				161,054				
OTHER				80,000				
COMMODITIES				70,000				
GENERAL				30,000				
ST. SUP. SPECIAL				40,000				
FEDERAL								
OTHER								
CAPTITAL-OTE								
GENERAL								
ST. SUP. SPECIAL								
FEDERAL								
OTHER								
EQUIPMENT				24,000				
GENERAL				24,000				
ST. SUP. SPECIAL								
FEDERAL								
OTHER								
VEHICLES								
GENERAL								
ST. SUP. SPECIAL								
FEDERAL								
OTHER								
WIRELESS DEV								
GENERAL								
ST. SUP. SPECIAL								
FEDERAL								
OTHER								
SUBSIDIES		28,000	(207,760)	6,692,073				
GENERAL			264,956	605,925				
ST. SUP. SPECIAL		28,000	(472,716)	5,367,202				
FEDERAL				718,946				
OTHER								
TOTAL	(28,000)	28,000	(105,626)	8,809,236				

FUNDING

GENERAL FUNDS			372,690	1,617,236				
ST. SUP. SPCL FUNDS	(28,000)	28,000	(478,316)	6,232,000				
FEDERAL FUNDS				880,000				
OTHER SP. FUNDS				80,000				
TOTAL	(28,000)	28,000	(105,626)	8,809,236				

POSITIONS

GENERAL FTE				1.33				
ST. SUP. SPCL. FTE				7.13				
FEDERAL FTE				1.00				
OTHER SP. FTE				0.04				
TOTAL				9.50				

PRIORITY LEVEL :

	6	7						
--	---	---	--	--	--	--	--	--

PROGRAM DECISION UNITS

Arts Commission

2 - Information & Technical Assistance

Name of Agency

Program Name

	A	B	C	D	E	F	G	H
EXPENDITURES	FY 2025 Appropriated	Escalations By DFA	Non-Recurring Items	Increase for the Building Fund	Increase for grant funds	Increase in funds and salary	Increase for website redesign	Use of Capital Expense Funds
SALARIES	207,490					16,934		
GENERAL	176,790					16,934		
ST. SUP. SPECIAL	30,700							
FEDERAL								
OTHER								
TRAVEL	11,100							
GENERAL	9,900							
ST. SUP. SPECIAL	1,200							
FEDERAL								
OTHER								
CONTRACTUAL	261,668						10,000	5,600
GENERAL	25,704						10,000	
ST. SUP. SPECIAL	175,700							5,600
FEDERAL	40,264							
OTHER	20,000							
COMMODITIES	17,500							
GENERAL	7,500							
ST. SUP. SPECIAL	10,000							
FEDERAL								
OTHER								
CAPTITAL-OTE								
GENERAL								
ST. SUP. SPECIAL								
FEDERAL								
OTHER								
EQUIPMENT	6,000							
GENERAL	6,000							
ST. SUP. SPECIAL								
FEDERAL								
OTHER								
VEHICLES								
GENERAL								
ST. SUP. SPECIAL								
FEDERAL								
OTHER								
WIRELESS DEV								
GENERAL								
ST. SUP. SPECIAL								
FEDERAL								
OTHER								
SUBSIDIES	1,724,957		(679,579)	554,400	66,239			
GENERAL	85,242				66,239			
ST. SUP. SPECIAL	1,459,979		(679,579)	554,400				
FEDERAL	179,736							
OTHER								
TOTAL	2,228,715		(679,579)	554,400	66,239	16,934	10,000	5,600

FUNDING

GENERAL FUNDS	311,136				66,239	16,934	10,000	
ST. SUP. SPCL FUNDS	1,677,579		(679,579)	554,400				5,600
FEDERAL FUNDS	220,000							
OTHER SP. FUNDS	20,000							
TOTAL	2,228,715		(679,579)	554,400	66,239	16,934	10,000	5,600

POSITIONS

GENERAL FTE	0.35							
ST. SUP. SPCL. FTE	1.86							
FEDERAL FTE	0.25							
OTHER SP. FTE	0.04							
TOTAL	2.50							

PRIORITY LEVEL :

				1	2	3	4	5
--	--	--	--	---	---	---	---	---

PROGRAM DECISION UNITS

	I	J	K	L				
EXPENDITURES	Reduction in contractual paid	Increase in grants paid	Total Funding Change	FY 2026 Total Request				
SALARIES			16,934	224,424				
GENERAL			16,934	193,724				
ST. SUP. SPECIAL				30,700				
FEDERAL								
OTHER								
TRAVEL				11,100				
GENERAL				9,900				
ST. SUP. SPECIAL				1,200				
FEDERAL								
OTHER								
CONTRACTUAL	(7,000)		8,600	270,268				
GENERAL			10,000	35,704				
ST. SUP. SPECIAL	(7,000)		(1,400)	174,300				
FEDERAL				40,264				
OTHER				20,000				
COMMODITIES				17,500				
GENERAL				7,500				
ST. SUP. SPECIAL				10,000				
FEDERAL								
OTHER								
CAPTITAL-OTE								
GENERAL								
ST. SUP. SPECIAL								
FEDERAL								
OTHER								
EQUIPMENT				6,000				
GENERAL				6,000				
ST. SUP. SPECIAL								
FEDERAL								
OTHER								
VEHICLES								
GENERAL								
ST. SUP. SPECIAL								
FEDERAL								
OTHER								
WIRELESS DEV								
GENERAL								
ST. SUP. SPECIAL								
FEDERAL								
OTHER								
SUBSIDIES		7,000	(51,940)	1,673,017				
GENERAL			66,239	151,481				
ST. SUP. SPECIAL		7,000	(118,179)	1,341,800				
FEDERAL				179,736				
OTHER								
TOTAL	(7,000)	7,000	(26,406)	2,202,309				

FUNDING

GENERAL FUNDS			93,173	404,309				
ST. SUP. SPCL FUNDS	(7,000)	7,000	(119,579)	1,558,000				
FEDERAL FUNDS				220,000				
OTHER SP. FUNDS				20,000				
TOTAL	(7,000)	7,000	(26,406)	2,202,309				

POSITIONS

GENERAL FTE				0.35				
ST. SUP. SPCL. FTE				1.86				
FEDERAL FTE				0.25				
OTHER SP. FTE				0.04				
TOTAL				2.50				

PRIORITY LEVEL :

	6	7						
--	---	---	--	--	--	--	--	--

PROGRAM NARRATIVE

Program Data Collected in Accordance with the Mississippi Performance Budget and Strategic Planning Act of 1994
(To Accompany Form MBR-1-03)

Arts Commission

1 - Grants

Name of Agency

Program Name

I. Program Description:

The Mississippi Arts Commission (MAC) serves as the state's public arts partner, supporting creativity in communities throughout the state. One of the primary ways MAC accomplishes this is through its grant programs. The agency utilizes its state and federal funds to support a wide range of artistic and creative activity, including projects sponsored by local governments and non-profits, as well as grants to individual artists.

MAC provides grant funds to non-profit organizations and local government entities through three different programs. The Operating Grant program provides general operating support to active professional arts organizations. The Project Grant program funds a wide range of artistic activities hosted by arts and non-arts organizations. The Minigrant program funds organizations that support artist performances or professional development. All of MAC's grants to organizations require a cash match, ensuring that there is local investment in the projects.

The agency also supports professional artists through a group of grant programs, including the Artist Fellowship, Artist Project Grant and Artist Minigrant. MAC also encourages artists to apply for the Mississippi Artist Roster, a list of professional artists who are available to present their art form through performances or workshops.

The agency divides its grant work into four program areas. The Arts Industry Program supports organizations that focus on presenting a specific art form (like a visual arts museum, theater, or dance group). The Arts Education Program works to create arts opportunities for Pre-K through 12th grade students. The Arts-Based Community Development Program assists groups that are using the arts to improve life in their community. Finally, the Folk and Traditional Arts Program focuses on efforts that promote Mississippi's folk and traditional art forms, including blues, bluegrass, gospel music, and traditional crafts.

II. Program Objective:

The Mississippi Arts Commission's grant programs work to:

Support high quality arts organizations and arts activities presented by non-profits or governmental entities through:

- Expanding the capacity of single discipline arts organizations through the Arts Industry grant program
- Increasing arts activities in pre-K-12 schools through the Arts Education grant program
- Expanding the capacity of community development activities that utilize the arts through the Arts-Based Community Development grant program
- Assisting organizations working to promote the state's folk and traditional art forms through the Folk and Traditional Arts grant program

Support the development of professional-level artists in Mississippi through the grant programs for individual artists through:

- Expanding the capacity and development of professional artists through the Artist Fellowship, Artist Minigrant and Folk Art Apprenticeship programs

Increase the access to MAC grant programs and the quality of applications submitted to the agency through:

- Tracking the number of communities and individuals it serves through grants to strategize for future recruitment
- Targeting potential grantees through annual grant writing workshops
- Providing ongoing support to applicants and grantees through consultations and site visits

III. Current program activities as supported by the funding in Columns 6-15 (FY 2025 & FY 2026 Increase/Decrease for continuations) of MBR-1-03 and designated Budget Unit Decisions columns of MBR-1-03-A:**(C) Non-Recurring:**

This subsidy amount includes Capitol Expense funds re-appropriated for FY25 to close out Building Fund for the Arts grants that were awarded in FY2024 (\$2,718,315).

PROGRAM NARRATIVE

Program Data Collected in Accordance with the Mississippi Performance Budget and Strategic Planning Act of 1994
(To Accompany Form MBR-1-03)

IV. Additional program activities that will result from increased funding requested in Columns 16-25 (MBR-1-03) and specified Budget Decision Unit Columns (MBR-1-03-A):

(D) Increase for the Building Fund for the Arts grant program:

This increase is to allow MAC to offer another round of Building Fund for the Arts grants. These grants help to fund repairs and renovations of local arts facilities.

(E) Increase for grant funds:

Increase of MAC's regular grants budget by a total of \$331,195.

(F) Increase in funds and salary authority for new position and realignment:

MAC is requesting an increase in funding and salary authority to create a new position and realign two other positions.

(G) Increase for website redesign:

Increase of funds for website redesign.

(H) Use of Capital Expense Funds for BFA administrative costs:

MAC is requesting to use 1% of Building Fund for the Arts Capital Expense Funds in order to cover administrative costs related to the BFA grants.

(I) Reduction in contractual paid with general funds:

Reduction in contractual expenses paid with general funds

(J) Increase in grants paid through state support special funds:

Increase amount of grants paid through state support special funds

PROGRAM NARRATIVE

Program Data Collected in Accordance with the Mississippi Performance Budget and Strategic Planning Act of 1994
(To Accompany Form MBR-1-03)

Arts Commission

2 - Information & Technical Assistance

Name of Agency

Program Name

I. Program Description:

As the primary advocate for the arts in Mississippi, the Mississippi Arts Commission (MAC) works to increase creative activity in the state through its grant and non-grants activities. While the grants programs provide support for a range of activities, MAC also recognizes there are a number of ways that the agency can assist communities and individual artists through professional development, technical support and other non-grants activities.

MAC has a long history of providing high quality professional development workshops for artists and staff from local arts organizations. The agency also presents ongoing workshops for individual artists. MAC has continued a regular series of online workshops for artists aspiring to become teaching artists for school presentations. The agency also hosts an annual statewide arts conference. The next one is scheduled for October 2024 in Jackson. The event will include different workshops for individual artists and staff from arts and cultural organizations.

These training opportunities also allow for artists and arts organization staff members from throughout the state to build informal networks and connections. The workshops allow them to connect and share information with others doing similar work in different regions of the state.

The Whole Schools Initiative, MAC's arts integration initiative for K-12 schools, is a service-based project which provides training to teachers and administrators in over 30 schools around the state on how to integrate arts across the curriculum.

MAC staff also serve as advisors for a wide range of cultural and community development efforts in the state. Staff members serve on the Mississippi Blues Commission, community assessment projects, and other more informal meetings with groups and artists. They also serve on committees for regional cultural projects, such as the Delta National Heritage Area.

MAC also works hard to build awareness for the arts in the state through multiple initiatives. The agency hosts "The Mississippi Arts Hour," a weekly arts interview radio show broadcast statewide on Mississippi Public Broadcasting. The show features in-depth interviews with artists and others involved in creative projects in the state. MAC is also a partner in the production of the Mississippi Writers Trail, a series of historical markers placed in communities around the state that celebrate Mississippi's literary heritage. The agency also produces the annual Governor's Arts Awards, which honors the state's most accomplished arts and arts organizations, as well as generating public awareness about the state of the arts in Mississippi. The agency also produces the "Mississippi Folklife" website, which features articles and photo essays on the state's folk culture.

II. Program Objective:

Increase the utilization of the arts in K-12 schools through a range of ongoing programs through:

- Training teachers on the integration of the arts in school curriculum through the Whole Schools Initiative
- Building awareness of poetry through the Poetry Out Loud Initiative
- Providing training to teachers through other Arts Education initiatives

Increasing awareness of Mississippi's artistic heritage, contemporary artists, and MAC through a range of ongoing programs, including:

- Producing the annual Governor's Arts Awards program
- Collaborating with Mississippi Public Broadcasting to produce the "Mississippi Arts Hour" radio show
- Publishing the Mississippi Artist Roster and Mississippi Teaching Artist Roster annually
- Publicizing the work of the Arts Commission through the agency's communications office

Increasing awareness of the state's folk and traditional art forms through ongoing special initiatives by MAC's Folk and Traditional Arts program, including:

- Documenting traditional art forms throughout the state
- Creating and edit new stories and other content for the "Mississippi Folklife" website

Offer a range of professional development opportunities for individual artists and people who work for arts and cultural organizations, including:

- Presenting a series of events that offer professional development and networking opportunities for individual artists

PROGRAM NARRATIVE

Program Data Collected in Accordance with the Mississippi Performance Budget and Strategic Planning Act of 1994
(To Accompany Form MBR-1-03)

III. Current program activities as supported by the funding in Columns 6-15 (FY 2025 & FY 2026 Increase/Decrease for continuations) of MBR-1-03 and designated Budget Unit Decisions columns of MBR-1-03-A:

(C) Non-Recurring:

This subsidy amount includes Capitol Expense funds re-appropriated for FY25 to close out Building Fund for the Arts grants that were awarded in FY2024 (\$679,579).

IV. Additional program activities that will result from increased funding requested in Columns 16-25 (MBR-1-03) and specified Budget Decision Unit Columns (MBR-1-03-A):

(D) Increase for the Building Fund for the Arts grant program:

This increase is to allow MAC to offer another round of Building Fund for the Arts grants. These grants help to fund repairs and renovations of local arts facilities.

(E) Increase for grant funds:

Increase of MAC's regular grants budget by a total of \$331,195.

(F) Increase in funds and salary authority for position realignment:

MAC is requesting an increase in funding and salary authority to create a new position and realign two other positions.

(G) Increase for website redesign:

Increase of funds for website redesign.

(H) Use of Capital Expense Funds for BFA administrative costs:

MAC is requesting to use 1% of Building Fund for the Arts Capital Expense Funds in order to cover administrative costs related to the BFA grants.

(I) Reduction in contractual paid with general funds:

Reduction in contractual expenses paid with general funds

(J) Increase in grants paid through state support special funds:

Increase amount of grants paid through state support special funds

PROGRAM PERFORMANCE MEASURES

Program Data Collected in Accordance with the Mississippi Performance Budget and Strategic Planning Act of 1994

* 0.00 in the "APPRO" column may indicate the measure is not in the agency appropriations bill.

Arts Commission (865-00)

1 - Grants

Name of Agency

PROGRAM NAME

PROGRAM OUTPUTS: (This is the measure of the process necessary to carry on the goals and objectives of this program. This is the volume produced, i.e., how many people served, how many documents generated.)

	FY 2024 APPRO	FY 2024 ACTUAL	FY 2025 ESTIMATED	FY 2026 PROJECTED
1 Grants Awarded to Non-Profit Organizations and Units of Local Government (Number Of)	0.00	162.00	170.00	175.00
2 Grants Awarded to Individual Artists (Number Of)	0.00	184.00	200.00	215.00
3 Individuals Served by Grants (Number Of)	0.00	1,365,523.00	1,450,000.00	1,500,000.00
4 Children Under 18 Served by Grants (Number Of)	0.00	574,919.00	600,000.00	625,000.00
5 Counties Where Grants Were Awarded (Number Of)	0.00	60.00	65.00	67.00
6 Site Visits Made by Staff (Number Of)	0.00	96.00	125.00	150.00
7 Consultations Provided by Staff (Number Of)	0.00	6,694.00	6,800.00	7,000.00
8 Total Grant Funds Awarded (Number Of)	0.00	5,845,340.00	8,623,311.00	8,400,000.00

PROGRAM EFFICIENCIES: (This is the measure of the cost, unit cost or productivity associated with a given outcome or output. This measure indicates linkage between services and funding, i.e., cost per investigation, cost per student or number of days to complete investigation.)

	FY 2024 APPRO	FY 2024 ACTUAL	FY 2025 ESTIMATED	FY 2026 PROJECTED
1 Percentage of Total Grant Budget Awarded to Non-Profit Organizations, Activities, and Units of Local Government (%)	0.00	0.00	0.00	0.00
2 Percentage of Total Grants Budget Awarded to Individual Artists (%)	0.00	0.00	0.00	0.00

PROGRAM OUTCOMES: (This is the measure of the quality or effectiveness of the services provided by this program. This measure provides an assessment of the actual impact or public benefit of your agency's actions. This is the results produced, i.e., increased customer satisfaction by x% within a 12-month period, reduce the number of traffic fatalities due to drunk drivers within a 12-month period.

	FY 2024 APPRO	FY 2024 ACTUAL	FY 2025 ESTIMATED	FY 2026 PROJECTED
1 Increase in Mississippi Counties Served Through Grants (%)	0.00	0.00	2.00	0.00
2 Increase in Grant Applications Received by the Agency (Number Of)	0.00	0.00	0.00	0.00
3 Increase in Applications Received From First-Time Applicants (%)	0.00	0.00	0.00	0.00

PROGRAM PERFORMANCE MEASURES

Program Data Collected in Accordance with the Mississippi Performance Budget and Strategic Planning Act of 1994

** 0.00 in the "APPRO" column may indicate the measure is not in the agency appropriations bill.*

Arts Commission (865-00)

2 - Information & Technical Assistance

Name of Agency

PROGRAM NAME

PROGRAM OUTPUTS: (This is the measure of the process necessary to carry on the goals and objectives of this program. This is the volume produced, i.e., how many people served, how many documents generated.)

	FY 2024 APPRO	FY 2024 ACTUAL	FY 2025 ESTIMATED	FY 2026 PROJECTED
1 Students, Teachers, and Administrators Participating in the Whole Schools Initiative (Number Of)	0.00	0.00	0.00	0.00
2 Attendees at the Governor's Arts Awards Ceremony (Number Of)	0.00	226.00	250.00	250.00
3 Estimated Listeners to the "Mississippi Arts Hour" Radio Show (Number Of)	0.00	7,900.00	8,000.00	8,250.00
4 Page Views on the Arts Commission's Website (Number Of)	0.00	125,888.00	135,000.00	140,000.00
5 Total reach of the agency's social media presence (Number Of)	0.00	484,551.00	500,000.00	515,000.00
6 Participants in Attendance at Professional Development Events (Number Of)	0.00	1,155.00	1,400.00	1,550.00

PROGRAM 3% GENERAL FUND REDUCTION AND NARRATIVE EXPLANATION

Arts Commission (865-00)

	Fiscal Year 2025 Funding			FY 2025 GF PERCENT REDUCED
	Total Funds	Reduced Amount	Reduced Funding Amount	

Program Name: (1) Grants				
General	1,244,546	(37,336)	1,207,210	(3.00%)
State Support Special	6,710,316		6,710,316	
Federal	880,000		880,000	
Other Special	80,000		80,000	
TOTAL	8,914,862	(37,336)	8,877,526	

Narrative Explanation:

If a cut to General Funds is announced during the fiscal year, MAC will make these cuts primarily in the contractual category. This will likely result in contracting a special initiative, such as professional development workshops for artists. The agency will also make smaller cuts in commodity purchases and staff travel.

Program Name: (2) Information & Technical Assistance				
General	311,136	(9,334)	301,802	(3.00%)
State Support Special	1,677,579		1,677,579	
Federal	220,000		220,000	
Other Special	20,000		20,000	
TOTAL	2,228,715	(9,334)	2,219,381	

Narrative Explanation:

If a cut to General Funds is announced during the fiscal year, MAC will make these cuts primarily in the contractual category. This will likely result in contracting a special initiative, such as professional development workshops for artists. The agency will also make smaller cuts in commodity purchases and staff travel.

Program Name: (99) Summary of All Programs				
General	1,555,682	(46,670)	1,509,012	(3.00%)
State Support Special	8,387,895		8,387,895	
Federal	1,100,000		1,100,000	
Other Special	100,000		100,000	
TOTAL	11,143,577	(46,670)	11,096,907	

ARTS COMMISSION MEMBERS

Arts Commission (865-00)

Name of Agency

A. Explain Rate and manner in which board members are reimbursed:

Commissioner's travel to and from meetings is reimbursed, if requested. Their travel is reimbursed at the current state allowable rate.

B. Estimated number of meetings FY 2025:

The Arts Commission board meets four times per year.

C. Board Members	City, Town, Residence	Appointed By	Date Appointed	Length of Term
1. Frank Bordeaux	Gulfport, MS	Tate Reeves	07/10/2020	four years
2. Dottye Graham	Meridian, MS	Tate Reeves	02/08/2021	three years
3. Jordan Perry	Jackson, MS	Tate Reeves	02/08/2021	four years
4. Verna Ransom	Indianola, MS	Tate Reeves	02/08/2021	three years
5. Frances Nelson	Madison, MS	Tate Reeves	06/09/2021	three years
6. Joe Rankin	Jackson, MS	Tate Reeves	07/01/2021	five years
7. Ada McGrevey	Decatur, MS	Tate Reeves	09/08/2021	five years
8. Julie Shepard	McComb, MS	Tate Reeves	09/23/2021	five years
9. Jamie Lincoln Ward	Madison, MS	Tate Reeves	06/28/2022	three years
10. Laura Howell	Leland, MS	Tate Reeves	06/28/2022	five years
11. Joanna McNeel	Madison, MS	Tate Reeves	08/11/2022	five years
12. Scott Naugle	Pass Christian, MS	Tate Reeves	09/15/2022	five years
13. Becky Montague	Hattiesburg, MS	Tate Reeves	08/15/2023	five years
14. Julie Martin	Meridian, MS	Tate Reeves	08/15/2023	five years
15. Marie Sanderson	Ocean Springs, MS	Tate Reeves	08/15/2023	four years

Identify Statutory Authority (Code Section or Executive Order Number)*

Chapter 498, Laws of 1968 (MS Code 1972 Anno. Sec. 39-11-1 et seq.)

*If Executive Order, please attach copy.

**SCHEDULE B
CONTRACTUAL SERVICES**

Arts Commission (865-00)

Name of Agency

MINOR OBJECT OF EXPENDITURE	(1) Actual Expenses FY Ending June 30, 2024	(2) Estimated Expenses FY Ending June 30, 2025	(3) Requested for FY Ending June 30, 2026
A. Tuition, Rewards & Awards (61050xxx-61080xxx)			
61050000 Tuition			
61060000 Employee Training	6,544	2,500	2,500
61070000 Travel Related Reg	1,110	2,500	2,500
61080000 Rewards & Awards	158		
Total	7,812	5,000	5,000
B. Transportation & Utilities (61100xxx-61200xxx)			
61100000 Transportation of Good	1,045	700	700
61110000 Postal Services	1,680	1,700	1,700
61200000 Utilities			
Total	2,725	2,400	2,400
C. Public Information (61300xxx-6131xxx)			
61300000 Advert & Public Info	8,310	3,000	3,000
61310000 Promotional Expense	1,806	1,500	1,500
Total	10,116	4,500	4,500
D. Rents (61400xxx-61490xxx)			
61400000 Building & Floor Space Rental			
61420000 Equipment Rental	4,484	5,000	5,000
61450000 Conference Rooms, Exhibits and Display Rentals	22,362	25,000	25,000
61490000 Other Rentals	2,916	3,000	3,000
Total	29,762	33,000	33,000
E. Repairs & Service (61500xxx)			
61500000 Repairs and Maintenance Services			
Total			
F. Fees, Professional & Other Services (6161xxxx-61699xxx)			
61600000 Inter-Agency Fees	6,927		
61610000 Contract Worker Expenses	20,256	1,850	1,850
61625000 Contract Worker Payroll Matching	1,498		
61660000 Accounting and Financial Services			
61670000 Legal and Related Services			
61680000 Medical Services			
61690000 Fees and Services	746,186	1,118,038	1,161,038
61695000 Prof Fees Travel 1099	68,378	65,359	65,359

**SCHEDULE B
CONTRACTUAL SERVICES**

Arts Commission (865-00)

Name of Agency

MINOR OBJECT OF EXPENDITURE	(1) Actual Expenses FY Ending June 30, 2024	(2) Estimated Expenses FY Ending June 30, 2025	(3) Requested for FY Ending June 30, 2026
61696000 Prof Fees Travel Non-1099	2,889	2,889	2,889
Total	846,134	1,188,136	1,231,136
G. Other Contractual Services (61700xxx-61790xxx, 61900xxx)			
61700000 Insurance Fees and Services	1,509	2,000	2,000
61705000 Banking and Credit Card Fees			
61710000 Membership Dues	60,915	40,000	40,000
61715000 Trade Subscription			
61735000 Salvage, Demo, removal			
61900000 Procurement Card - Contractual Purchases	8,735	9,000	9,000
Total	71,159	51,000	51,000
H. Information Technology (61800xxx-61890xxx)			
61618000 Cellular Usage			
61800000 Basic Telephone			
61803000 Long Distance Charges			
61806000 Data Line and Network Charges			
61824000 Satellite Voice Transmission			
61830000 IT Professional Fees - Outside Vendor	7,600	7,500	7,500
61831000 Wireless Data Transmission			
61836000 Outsourced IT Solutions - Outside Vendor	15,044	15,000	15,000
61839000 Software Acq., Installation & Maintenance	1,872		
61842000 Rental of IT Equipment			
61845000 Off-site Storage of IS Software			
61848000 Maintenance Repair of IT Equipment	1,151	1,500	1,500
61850000 Payments to ITS	237	300	300
Total	25,904	24,300	24,300
I. Other (61910xxx-61990xxx)			
61910000 Petty Cash Expense - Contractual			
61920000 Travel Related Contractual Reimbursements			
61960000 Prior Year Expense - Contractual			
Total			
Grand Total <i>(Enter on Line 1-B of Form MBR-1)</i>	993,612	1,308,336	1,351,336
Funding Summary:			
General Funds	172,795	128,520	178,520
State Support Special Funds	697,817	878,498	871,498

**SCHEDULE B
CONTRACTUAL SERVICES**

Arts Commission (865-00)

Name of Agency _____

MINOR OBJECT OF EXPENDITURE	(1) Actual Expenses FY Ending June 30, 2024	(2) Estimated Expenses FY Ending June 30, 2025	(3) Requested for FY Ending June 30, 2026
Federal Funds	78,869	201,318	201,318
Other Special Funds	44,131	100,000	100,000
Total Funds	993,612	1,308,336	1,351,336

**SCHEDULE C
COMMODITIES**

Arts Commission (865-00)

Name of Agency

MINOR OBJECT OF EXPENDITURE	(1) Actual Expenses FY Ending June 30, 2024	(2) Estimated Expenses FY Ending June 30, 2025	(3) Requested for FY Ending June 30, 2026
A. Maintenance & Constr. Materials & Supplies (62000xxx, 62015xxx)			
61050000 Tuition			
61060000 Employee Training			
61070000 Travel Related Reg			
62015000 Building and Construction Materials	2,077	800	800
Total	2,077	800	800
B. Printing & Office Supplies & Materials (62010xxx, 62085xxx, 62100xxx, 62125xxx, 62400xxx)			
62010000 Books, Periodicals, Maps & Instructional Material	5,937	500	500
62085000 Office Supplies and Materials	5,171	5,000	5,000
62100000 Printing Costs and Supplies	6,181	6,000	6,000
62400000 Furniture and Equipment	4,021	3,000	3,000
Total	21,310	14,500	14,500
C. Equipment Repair Parts, Supplies & Acces. (6205xxxx, 62072xxx, 62110xxx, 62115xxx, 62120xxx, 62130xxx)			
62050000 Fuel			
62055000 Fuel Card Repairs and Maintenance			
62115000 Parks & Access - Office, IT and Other Equip	3,131	5,000	5,000
62130000 Tires and Tubes			
Total	3,131	5,000	5,000
D. Professional & Sci. Supplies and Materials (62025xxx, 62030xxx, 62070xxx, 62095xxx, 62105xxx, 6212xxxx)			
62025000 Education Supplies	3,132	5,000	5,000
62070000 Lab and Medical Supplies			
62095000 Photographic Supplies and Processing			
62105000 Promotion Materials	8,059	7,000	7,000
Total	11,191	12,000	12,000
E. Other Supplies & Materials (62005xxx, 62015xxx, 62020xxx, 62035xxx, 62040xxx, 62045xxx, 62060xxx, 62065xxx, 62075xxx-62080xxx, 62090xxx, 62115xxx, 62135xxx, 62140xxx, 62405xxx, 62415xxx, 62500xxx-62999xxx)			
62020000 Decals And Signs	5,060	800	800
62040000 Food for Business Meetings	43,794	45,000	45,000
62045000 Food for Persons			
62060000 Janitorial and Cleaning Supplies	29	100	100
62078000 Other Miscellaneous Supplies	4,611	800	800
62135000 Uniforms and Apparel	98		
62405000 Vehicle Equipment			
62415000 Computers and Computer Equipment	650	1,500	1,500
62900000 Procurement Card - Commodity Purchases	13,775	7,000	7,000

**SCHEDULE C
COMMODITIES**

Arts Commission (865-00)

Name of Agency

MINOR OBJECT OF EXPENDITURE	(1) Actual Expenses FY Ending June 30, 2024	(2) Estimated Expenses FY Ending June 30, 2025	(3) Requested for FY Ending June 30, 2026
62910000 Petty Cash Expenses - Commodities			
62920000 Reimbursable Travel - Commodities			
62960000 Prior Year Expense - Commodities	736		
Total	68,753	55,200	55,200
Grand Total <i>(Enter on Line 1-C of Form MBR-1)</i>	106,462	87,500	87,500
Funding Summary:			
General Funds	20,219	37,500	37,500
State Support Special Funds	75,747	50,000	50,000
Federal Funds	4,627		
Other Special Funds	5,869		
Total Funds	106,462	87,500	87,500

**SCHEDULE D-1
 CAPITAL OUTLAY
 OTHER THAN EQUIPMENT**

Arts Commission (865-00)

Name of Agency

MINOR OBJECT OF EXPENDITURE	(1) Actual Expenses FY Ending June 30, 2024	(2) Estimated Expenses FY Ending June 30, 2025	(3) Requested for FY Ending June 30, 2026
-----------------------------	--	---	--

Grand Total <i>(Enter on Line 1-D-1 of Form MBR-1)</i>			
--	--	--	--

Funding Summary:			
General Funds			
State Support Special Funds			
Federal Funds			
Other Special Funds			
Total Funds			

**SCHEDULE D-2
CAPITAL OUTLAY EQUIPMENT**

Arts Commission (865-00)

Name of Agency

EQUIPMENT BY ITEM	Act. FY Ending June 30, 2024		Est. FY Ending June 30, 2025		Req. FY Ending June 30, 2026	
	No. of Units	Total Cost	No. of Units	Total Cost	No. of Units	Total Cost

C. Office Machines, Furniture, Fixtures, Equip. (63200xxx)						
Office Desk	7	13,625	2	3,000	2	3,000
Office Furniture			10	10,000	10	10,000
Total		13,625		13,000		13,000

D. IT/IS Equipment (DP & Telecommunications) (63200xxx)						
Apple MacBook	1	1,979				
Ipads	10	8,810				
Network Switch	1	1,745				
Desktop Computer	6	5,999	6	9,000	6	9,000
Laptop Computer	4	5,028	4	8,000	4	8,000
Apple Desktop	1	587				
Projector	1	1,011				
Total		25,159		17,000		17,000

Grand Total <i>(Enter on Line 1-D-2 of Form MBR-1)</i>		38,784		30,000		30,000
--	--	---------------	--	---------------	--	---------------

Funding Summary:						
General Funds		10,626		30,000		30,000
State Support Special Funds		28,158				
Federal Funds						
Other Special Funds						
Total Funds		38,784		30,000		30,000

**SCHEDULE D-3
PASSENGER/WORK VEHICLES**

Arts Commission (865-00)

Name of Agency

MINOR OBJECT OF EXPENDITURE	Vehicle Inventory June 30, 2024	Act. FY Ending June 30, 2024		Est. FY Ending June 30, 2025		Req. FY Ending June 30, 2026	
		No. of Units	Total Cost	No. of Units	Total Cost	No. of Units	Total Cost

GRAND TOTAL <i>(Enter on Line 1-D-3 of Form MBR-1)</i>							
--	--	--	--	--	--	--	--

Funding Summary:			
General Funds			
State Support Special Funds			
Federal Funds			
Other Special Funds			
Total Funds			

**SCHEDULE D-4
WIRELESS COMMUNICATION DEVICES**

Arts Commission (865-00)

Name of Agency _____

MINOR OBJECT OF EXPENDITURE	Device Inventory June 30, 2024	Act. FY Ending June 30, 2024		Est. FY Ending June 30, 2025		Req. FY Ending June 30, 2026	
		No. of Devices	Actual Cost	No. of Devices	Estimated Cost	No. of Devices	Requested Cost

Grand Total <i>(Enter on Line 1-D-4 of Form MBR-1)</i>							
--	--	--	--	--	--	--	--

Funding Summary:							
General Funds							
State Support Special Funds							
Federal Funds							
Other Special Funds							
Total Funds							

**SCHEDULE E
SUBSIDIES, LOANS & GRANTS**

Arts Commission (865-00)

Name of Agency

MINOR OBJECT OF EXPENDITURE	(1) Actual Expenses FY Ending June 30, 2024	(2) Estimated Expenses FY Ending June 30, 2025	(3) Requested for FY Ending June 30, 2026
A. School Grants to Counties & Municipalities (67020xxx, 67300xxx-67650xxx)			
Grants by County & Municipalities	436,225	1,542,681	1,440,693
Total	436,225	1,542,681	1,440,693
B. Grants to IHL & Other Political Subdivisions (67650xxx-67670xxx)			
Grants to IHL & Other Political Subdivisions	84,477	186,238	181,566
Total	84,477	186,238	181,566
C. Grants to Non-Government Instns & Inds (67152xxx)			
Grants to Non-government institutions and Individuals	5,330,439	6,895,871	6,742,831
Total	5,330,439	6,895,871	6,742,831
Grand Total <i>(Enter on Line 1-E of Form MBR-1)</i>	5,851,141	8,624,790	8,365,090
Funding Summary:			
General Funds	466,114	426,211	757,406
State Support Special Funds	4,453,387	7,299,897	6,709,002
Federal Funds	931,640	898,682	898,682
Other Special Funds			
Total Funds	5,851,141	8,624,790	8,365,090

NARRATIVE
2026 BUDGET REQUEST

Arts Commission (865-00)

Name of Agency

Established by the Legislature in 1968, the Mississippi Arts Commission (MAC) is the official grant making and service agency for the arts in the state. It provides grants and technical assistance for arts programming for Mississippians of all ages. MAC works with a variety of groups, including arts organizations, schools, local governments, as well as with individual artists.

The agency is requesting a \$465,863 increase in General Funds for FY2026. The additional funds will allow MAC to increase grant awards, adding a staff person and re-aligning two staff, and support required updates to the agency's websites.

- MAC will spend \$331,195 on increases to its annual grant programs as well as support new grant initiatives. The agency will spend \$251,195 to maximize the funds awarded through its annual grants to community arts centers and professional artists. MAC will also provide a \$50,000 grant for the staging of the National Folk Festival in Jackson and spend \$30,000 on a pilot public arts program that supports community development work.

- \$84,668 is for re-aligning staff titles and adding a new position. Due to increased grant support for individual artists around the state, MAC needs to re-align a current staff person to manage this work and add a new employee to take on this staff person's current duties. MAC also needs to re-align the agency's grants director to a deputy administrator position to reflect the employee's current duties.

- \$50,000 will support required updates to the agency's websites (including the main agency site as well as program-specific sites for Mississippi Whole Schools and Folk Arts). The work includes updates to meet new web security standards for government sites as well as comply with Americans with Disabilities Act (ADA) standards for websites.

**OUT-OF-STATE TRAVEL
FISCAL YEAR 2026**

Arts Commission (865-00)

Name of Agency

Note: All expenditures recorded on this form must be totaled and said total must agree with the out-of-state travel amount indicated for FY 2024 on Form Mbr-1, line 1.A.2.b.

Employee's Name	Destination	Purpose	Travel Cost	Funding Source
David Lewis	Austin, TX	GAA Filming	1,061	2286500000
David Lewis	Santa Fe, NM	NASAA Executive Forum	2,462	2286500000
David Lewis	Charlotte, NC	NEA Summit	409	2286500000
David Lewis	Atlanta, GA	South Arts Creative Placemaking Summit	964	2286500000
Eleanor Banks	Washington, DC	America Conference	468	4410800000
Larry Morrissey	Santa Fe, NM	NASAA Executive Forum	1,247	2286500000
Leslie Barker	Atlanta, GA	South Arts Creative Placemaking Summit	1,123	2286500000
Maria Zeringue	Thibodaux, LA	LA Folklife Society Annual Conference	309	2286500000
Maria Zeringue	Portland, OR	American Folklore Society Conference	1,602	2286500000
Victoria Meek	Seattle, WA	ADA Conference	926	4410800000
Victoria Meek	Boston, MA	LEAD Conference	2,295	2286500000
Total Out of State Cost			\$ 12,866	

FEES, PROFESSIONAL AND OTHER SERVICES

Arts Commission (865-00)

Name of Agency

TYPE OF FEE AND NAME OF VENDOR	Retired w/ PERS	(1) Actual Expenses FY Ending June 30, 2024	(2) Estimated Expenses FY Ending June 30, 2025	(3) Requested Expenses FY Ending June 30, 2026	Fund Source
61600000 Inter-Agency Fees					
Department of Finance and Administration/					
<i>Comp. Rate:</i>					
		6,927			2286500000
Total 61600000 Inter-Agency Fees		6,927			
61610000 Contract Worker Expenses					
Anna Jaubert/Grants Intern					
<i>Comp. Rate: \$10 per hour</i>					
		286			2286500000
EEF Contract Worker/Whole Schools Administrator					
<i>Comp. Rate: \$10 per hour</i>					
		3,990	1,850	1,850	4410800000
Gen Funds Contractor Worker/Interns					
<i>Comp. Rate: \$15 per hour</i>					
		15,980			2286500000
Total 61610000 Contract Worker Expenses		20,256	1,850	1,850	
61690000 Fees and Services					
4IMPRINT INC/project set up					
<i>Comp. Rate: 55 for contractual work</i>					
		55	55	55	4410800000
A Plus Signs & Creative/signage installers					
<i>Comp. Rate: 1195 for contractual work</i>					
		1,195			2286500000
AA'KEELA HUDNALL/grant panelist					
<i>Comp. Rate: 150 for contractual work</i>					
		150	150	150	2286500000
AA'KEELA HUDNALL/grant panelist					
<i>Comp. Rate: 250 for contractual work</i>					
		250	250	250	2286500000
AA'KEELA HUDNALL/state arts conference panelist					
<i>Comp. Rate: 100 for contractual work</i>					
		100	100	100	5386500000
AARON SANDERS HEAD/grant panelist					
<i>Comp. Rate: 200 for contractual work</i>					
		200	200	200	2286500000
ACTME LLC/arts education consultant					
<i>Comp. Rate: 1,150 for contractual work</i>					
		1,150	1,150	1,150	3386500000
ACTME LLC/arts education consultant					
<i>Comp. Rate: 2,300 for contractual work</i>					
		2,300	2,300	2,300	4410800000
ACTME LLC/arts education consultant					
<i>Comp. Rate: 1,512 for contractual work</i>					
		1,513	1,513	1,513	4410800000
ACTME LLC/arts education consultant					
<i>Comp. Rate: 2,237 for contractual work</i>					
		2,238	2,238	2,238	4410800000
ACTME LLC/arts education consultant					
<i>Comp. Rate: 1,900 for contractual work</i>					
		1,900	1,900	1,900	4410800000
ACTME LLC/arts education consultant					
<i>Comp. Rate: 2,187 for contractual work</i>					
		2,188	2,188	2,188	4410800000
ACTME LLC/arts education consultant					
<i>Comp. Rate: 2,243 for contractual work</i>					
		2,244	2,244	2,244	4410800000
ACTME LLC/arts education consultant					
<i>Comp. Rate: 1,568 for contractual work</i>					
		1,569	1,569	1,569	4410800000
ACTME LLC/arts education consultant					
<i>Comp. Rate: 1,400 for contractual work</i>					
		1,400	1,400	1,400	4410800000

FEES, PROFESSIONAL AND OTHER SERVICES

Arts Commission (865-00)

Name of Agency					
TYPE OF FEE AND NAME OF VENDOR	Retired w/ PERS	(1) Actual Expenses FY Ending June 30, 2024	(2) Estimated Expenses FY Ending June 30, 2025	(3) Requested Expenses FY Ending June 30, 2026	Fund Source
ACTME LLC/arts education consultant <i>Comp. Rate: 2,400 for contractual work</i>		2,400	2,400	2,400	4410800000
ACTME LLC/arts education consultant <i>Comp. Rate: 2,375 for contractual work</i>		2,375	2,375	2,375	4410800000
ACTME LLC/arts education consultant <i>Comp. Rate: 2,950 for contractual work</i>		2,950	2,950	2,950	4410800000
Actme LLC/Summer Institute Support <i>Comp. Rate: 5260 for contractual work</i>		5,260			4410800000
ADAM COLLIER ENVELOPE PUSHERS MUSIC/grant panelist <i>Comp. Rate: 150 for contractual work</i>		150	150	150	2286500000
ADAM TREST/arts education consultant <i>Comp. Rate: 2,500 for contractual work</i>		2,500	2,500	2,500	3386500000
ADAM TREST/state arts conference key note speaker <i>Comp. Rate: 1,800 for contractual work</i>		1,800	1,800	1,800	5386500000
ADDIE CITCHENS/ms folklife editor <i>Comp. Rate: 700 for contractual work</i>		700	700	700	5386500000
ALEXIS NOBLE/state arts conference panelist <i>Comp. Rate: 100 for contractual work</i>		100	100	100	5386500000
ALIZA MORAN/grant panelist <i>Comp. Rate: 200 for contractual work</i>		200	200	200	4410800000
Amanda Koonlaba/Summer Institute Presenter <i>Comp. Rate: 2436 for contractual work</i>		2,436			4410800000
AMANDA MALLOY/ms folklife visual arts editor <i>Comp. Rate: 700 for contractual work</i>		700	700	700	5386500000
AMBER MARIA COBBINS/social media coordinator <i>Comp. Rate: 140 for contractual work</i>		140	140	140	5386500000
AMBER MARIA COBBINS/social media coordinator <i>Comp. Rate: 20 for contractual work</i>		20	20	20	5386500000
AMBER MARIA COBBINS/social media coordinator <i>Comp. Rate: 10 for contractual work</i>		10	10	10	5386500000
AMBER MARIA COBBINS/social media coordinator <i>Comp. Rate: 5 for contractual work</i>		5	5	5	5386500000
AMBER MARIA COBBINS/social media coordinator <i>Comp. Rate: 1,820 for contractual work</i>		1,820	1,820	1,820	3386500000
AMBER MARIA COBBINS/social media coordinator <i>Comp. Rate: 385 for contractual work</i>		385	385	385	4410800000
AMBER MARIA COBBINS/social media coordinator <i>Comp. Rate: 40 for contractual work</i>		40	40	40	4410800000
AMBER MARIA COBBINS/social media coordinator <i>Comp. Rate: 245 for contractual work</i>		245	245	245	4410800000
AMBER MARIA COBBINS/social media serv <i>Comp. Rate: 540 for contractual work</i>		540	540	540	2286500000
AMBER MARIA COBBINS/social media serv <i>Comp. Rate: 890 for contractual work</i>		890	890	890	2286500000
AMBER MARIA COBBINS/social media serv <i>Comp. Rate: 495 for contractual work</i>		495	495	495	2286500000

FEES, PROFESSIONAL AND OTHER SERVICES

Arts Commission (865-00)

Name of Agency

TYPE OF FEE AND NAME OF VENDOR	Retired w/ PERS	(1) Actual Expenses FY Ending June 30, 2024	(2) Estimated Expenses FY Ending June 30, 2025	(3) Requested Expenses FY Ending June 30, 2026	Fund Source
AMBER MARIA COBBINS/social media serv <i>Comp. Rate: 1,040 for contractual work</i>		1,040	1,040	1,040	2286500000
AMILE WILSON/grant panelist <i>Comp. Rate: 150 for contractual work</i>		150	150	150	2286500000
AMOS PAUL KENNEDY, JR. KENNEDY PRINTS, LLC/grant <i>Comp. Rate: 250 for contractual work</i>		250	250	250	2286500000
AMY ELIZABETH RICE/writing sample workshop presenter <i>Comp. Rate: 350 for contractual work</i>		350	350	350	2286500000
AMY ELIZABETH RICE/writing workshop presenter <i>Comp. Rate: 350 for contractual work</i>		350	350	350	2286500000
ANDREA SCHIPKE/arts education consultant <i>Comp. Rate: 1,850 for contractual work</i>		1,850	1,850	1,850	4410800000
ANDREW CARY YOUNG/state arts conference panelist <i>Comp. Rate: 100 for contractual work</i>		100	100	100	5386500000
ANDREW DILLON/arts education consultant <i>Comp. Rate: 350 for contractual work</i>		350	350	350	3386500000
ANDREW DILLON/arts education consultant <i>Comp. Rate: 1,900 for contractual work</i>		1,900	1,900	1,900	4410800000
ANDREW DILLON/state arts conference presenter <i>Comp. Rate: 500 for contractual work</i>		500	500	500	5386500000
ANGELA R COOPER/arts education consultant <i>Comp. Rate: 850 for contractual work</i>		850	850	850	4410800000
ANN W. FISHER-WIRTH/grant panelist <i>Comp. Rate: 200 for contractual work</i>		200	200	200	2286500000
ANNA C ZURAWSKI/arts education consultant <i>Comp. Rate: 622 for contractual work</i>		623	623	623	3386500000
ANQUANIZIA HALL/arts education consultant <i>Comp. Rate: 637 for contractual work</i>		638	638	638	4410800000
ANQUANIZIA HALL/arts education consultant <i>Comp. Rate: 1,350 for contractual work</i>		1,350	1,350	1,350	4410800000
ANQUANIZIA HALL/arts education consultant <i>Comp. Rate: 687 for contractual work</i>		688	688	688	4410800000
ANQUANIZIA HALL/arts education consultant <i>Comp. Rate: 425 for contractual work</i>		425	425	425	4410800000
ANQUANIZIA HALL/arts education consultant <i>Comp. Rate: 912 for contractual work</i>		913	913	913	4410800000
ANQUANIZIA HALL/arts education consultant <i>Comp. Rate: 575 for contractual work</i>		575	575	575	4410800000
ANQUANIZIA HALL/arts education consultant <i>Comp. Rate: 262 for contractual work</i>		263	263	263	4410800000
ANQUANIZIA HALL/arts education consultant <i>Comp. Rate: 1,131 for contractual work</i>		1,131	1,131	1,131	4410800000
Anquinizia Hall/arts education consultant <i>Comp. Rate: 113 for contractual work</i>		113			4410800000
ANTOINETTE BADENHORST <i>Comp. Rate: 3,000 for contractual work</i>		3,000	3,000	3,000	4410800000

FEES, PROFESSIONAL AND OTHER SERVICES

Arts Commission (865-00)

Name of Agency					
TYPE OF FEE AND NAME OF VENDOR	Retired w/ PERS	(1) Actual Expenses FY Ending June 30, 2024	(2) Estimated Expenses FY Ending June 30, 2025	(3) Requested Expenses FY Ending June 30, 2026	Fund Source
ANTOINETTE BADENHORST <i>Comp. Rate: 2,000 for contractual work</i>		2,000	2,000	2,000	4410800000
ANTONIO R ALTMAN/grant panelist <i>Comp. Rate: 150 for contractual work</i>		150	150	150	2286500000
Artist workshop leaders/professional development <i>Comp. Rate: 500 to 1200 per contract</i>			15,000	15,000	2286500000
BECKY E. HAGENSTON/grant panelist <i>Comp. Rate: 250 for contractual work</i>		250	250	250	2286500000
BELINDA MCKINION/arts education consultant <i>Comp. Rate: 100 for contractual work</i>		100	100	100	4410800000
BENJAMIN ALAN MORRIS/grant panelist <i>Comp. Rate: 200 for contractual work</i>		200	200	200	2286500000
BENJAMIN TYLER TADLOCK SOUTHERN CULT LLC/folklife <i>Comp. Rate: 1,875 for contractual work</i>		1,875	1,875	1,875	2286500000
BENJAMIN TYLER TADLOCK SOUTHERN CULT LLC/web <i>Comp. Rate: 2,000 for contractual work</i>		2,000	2,000	2,000	5386500000
BERNEECE HERBERT/grant panelist <i>Comp. Rate: 300 for contractual work</i>		300	300	300	2286500000
BFA Project Manager/manage BFA <i>Comp. Rate: 63000 for contractual work</i>				63,000	6493400000
BIORHYTHMS PUBLISHING LLC/arts education consultant <i>Comp. Rate: 5,000 for contractual work</i>		5,000	5,000	5,000	3386500000
BLAKE BARNES/grant panelist <i>Comp. Rate: 250 for contractual work</i>		250	250	250	2286500000
BLAKE BARNES/state arts conference panelist <i>Comp. Rate: 100 for contractual work</i>		100	100	100	5386500000
BLASINGAME RHONDA/grant panelist <i>Comp. Rate: 200 for contractual work</i>		200	200	200	2286500000
BOLINSKY KENNETH/Poetry Outloud coordinator <i>Comp. Rate: 76 for contractual work</i>		77	77	77	5386500000
Brejenn Allen/Summer Institute Presenter <i>Comp. Rate: 2000 for contractual work</i>		2,000			4410800000
BURKHEAD RICKY/grant panelist <i>Comp. Rate: 200 for contractual work</i>		200	200	200	2286500000
BUSBEA STEPHANIE DICKSON/arts education consultant <i>Comp. Rate: 1,000 for contractual work</i>		1,000	1,000	1,000	3386500000
CALEB WILLIS/arts education consultant <i>Comp. Rate: 630 for contractual work</i>		630	630	630	3386500000
CAPITAL HOTEL ASSOCIATES LLC THE WESTIN <i>Comp. Rate: 750 for contractual work</i>		750	750	750	5386500000
CAPITAL HOTEL ASSOCIATES LLC THE WESTIN <i>Comp. Rate: 196 for contractual work</i>		196	196	196	2286500000
CARL WILLIAMS/grant panelist <i>Comp. Rate: 250 for contractual work</i>		250	250	250	2286500000
CASEY WATTS/arts education consultant <i>Comp. Rate: 1,850 for contractual work</i>		1,850	1,850	1,850	4410800000

FEES, PROFESSIONAL AND OTHER SERVICES

Arts Commission (865-00)

Name of Agency

TYPE OF FEE AND NAME OF VENDOR	Retired w/ PERS	(1) Actual Expenses FY Ending June 30, 2024	(2) Estimated Expenses FY Ending June 30, 2025	(3) Requested Expenses FY Ending June 30, 2026	Fund Source
CATHERINE A GRAY/state arts conference panelist <i>Comp. Rate: 100 for contractual work</i>		100	100	100	5386500000
CATHERINE PIERCE/arts education consultant <i>Comp. Rate: 3,600 for contractual work</i>		3,600	3,600	3,600	3386500000
CAZATEATRO BILINGUAL THEATER GROUP/state arts <i>Comp. Rate: 750 for contractual work</i>		750	750	750	5386500000
Center for Puppetry/Summer Institute Presenter <i>Comp. Rate: 550 for contractual work</i>		550			4410800000
CHALK AND CHANCES, LLC/arts education consultant <i>Comp. Rate: 7,500 for contractual work</i>		7,500	7,500	7,500	3386500000
CHANCE ALEXANDER ROOTES/arts education consultant <i>Comp. Rate: 633 for contractual work</i>		634	634	634	3386500000
CHANDRA WILLIAMS/grant panelist <i>Comp. Rate: 200 for contractual work</i>		200	200	200	2286500000
CHERITA BRENT/grant panelist <i>Comp. Rate: 250 for contractual work</i>		250	250	250	2286500000
CHERYL LEE BURGEMEISTER/arts education consultant <i>Comp. Rate: 8,500 for contractual work</i>		8,500	8,500	8,500	4410800000
CHLOE JACKSON/grant panelist <i>Comp. Rate: 150 for contractual work</i>		150	150	150	2286500000
CLASSIC CREATIONS INC/Set-UP <i>Comp. Rate: 95 for contractual work</i>		95	95	95	2286500000
COMMONHOUSE PRODUCTIONS, LLC/arts education <i>Comp. Rate: 4,000 for contractual work</i>		4,000	4,000	4,000	4410800000
CONDE CONTEMPORARY, LLC/grant panelist <i>Comp. Rate: 250 for contractual work</i>		250	250	250	2286500000
CONNOR HAMMOND/arts education consultant <i>Comp. Rate: 641 for contractual work</i>		641	641	641	3386500000
CORNERSTONE CONSULTING GROUP/accounting services <i>Comp. Rate: 405 for contractual work</i>		405	405	405	2286500000
CORNERSTONE CONSULTING GROUP/accounting services <i>Comp. Rate: 2,205 for contractual work</i>		2,205	2,205	2,205	2286500000
CRISTINA SALTOS/grant panelist <i>Comp. Rate: 250 for contractual work</i>		250	250	250	2286500000
DAMEIN WASH/arts education consultant <i>Comp. Rate: 200 for contractual work</i>		200	200	200	4410800000
DAMEIN WASH/arts education consultant <i>Comp. Rate: 400 for contractual work</i>		400	400	400	4410800000
Damein Wash/Summer Institute Presenter <i>Comp. Rate: 2000 for contractual work</i>		2,000			4410800000
DANIELLE LENAELITTLEFIELD/Poetry Outloud judge <i>Comp. Rate: 150 for contractual work</i>		150	150	150	5386500000
DELAINEY BOWERS/MS Folklife Survey <i>Comp. Rate: 707 for contractual work</i>		707	707	707	5386500000
DELAINEY BOWERS/MS Folklife Survey <i>Comp. Rate: 2,000 for contractual work</i>		2,000	2,000	2,000	5386500000

FEES, PROFESSIONAL AND OTHER SERVICES

Arts Commission (865-00)

Name of Agency					
TYPE OF FEE AND NAME OF VENDOR	Retired w/ PERS	(1) Actual Expenses FY Ending June 30, 2024	(2) Estimated Expenses FY Ending June 30, 2025	(3) Requested Expenses FY Ending June 30, 2026	Fund Source
DE'MERICK WHITE/arts education consultant <i>Comp. Rate: 250 for contractual work</i>		250	250	250	3386500000
DEPT. OF ARCHIVES AND HISTORY/GAA rentor <i>Comp. Rate: 950 for contractual work</i>		950	950	950	2286500000
DIANE WILLIAMS/Poetry Outloud judge <i>Comp. Rate: 150 for contractual work</i>		150	150	150	5386500000
DUNCANSON CREATIONS LLC/arts education consultant <i>Comp. Rate: 2,875 for contractual work</i>		2,875	2,875	2,875	3386500000
DUNKINGTON ART & JEWELRY JOSH HERRINGTON/Poetry <i>Comp. Rate: 60 for contractual work</i>		60	60	60	5386500000
EARL POOLE BALL/governor's arts awards recipient <i>Comp. Rate: 1,056 for contractual work</i>		1,056	1,056	1,056	2286500000
ELLEN LANGFORD/state arts conference panelist <i>Comp. Rate: 100 for contractual work</i>		100	100	100	5386500000
EMILY B. ROGERS/ms folklife editor <i>Comp. Rate: 700 for contractual work</i>		700	700	700	5386500000
EMILY BRYANT/grant panelist <i>Comp. Rate: 150 for contractual work</i>		150	150	150	2286500000
EMILY BRYANT/MS Folklife writer <i>Comp. Rate: 500 for contractual work</i>		500	500	500	5386500000
ERICA CLARISSA MCKINNEY/arts education consultant <i>Comp. Rate: 5,000 for contractual work</i>		5,000	5,000	5,000	4410800000
ERIK A STERN/arts education consultant <i>Comp. Rate: 1,750 for contractual work</i>		1,750	1,750	1,750	3386500000
ERIN MULLIGAN/arts education consultant <i>Comp. Rate: 2,525 for contractual work</i>		2,525	2,525	2,525	4410800000
ERIN MULLIGAN/arts education consultant <i>Comp. Rate: 2,175 for contractual work</i>		2,175	2,175	2,175	4410800000
ERIN MULLIGAN/arts education consultant <i>Comp. Rate: 2,606 for contractual work</i>		2,606	2,606	2,606	4410800000
Erin Mulligan/arts education consultant <i>Comp. Rate: 2513 for contractual work</i>		2,513			4410800000
ERIN MULLIGAN/arts education consultant <i>Comp. Rate: 2,125 for contractual work</i>		2,125	2,125	2,125	4410800000
ERIN MULLIGAN/arts education consultant <i>Comp. Rate: 2,025 for contractual work</i>		2,025	2,025	2,025	4410800000
ERIN MULLIGAN/arts education consultant <i>Comp. Rate: 1,681 for contractual work</i>		1,681	1,681	1,681	4410800000
ERIN MULLIGAN/arts education consultant <i>Comp. Rate: 1,825 for contractual work</i>		1,825	1,825	1,825	4410800000
ERIN MULLIGAN/arts education consultant <i>Comp. Rate: 1,987 for contractual work</i>		1,988	1,988	1,988	4410800000
ERIN MULLIGAN/arts education consultant <i>Comp. Rate: 1,493 for contractual work</i>		1,494	1,494	1,494	4410800000
ERIN MULLIGAN/arts education consultant <i>Comp. Rate: 1,656 for contractual work</i>		1,656	1,656	1,656	4410800000

FEES, PROFESSIONAL AND OTHER SERVICES

Arts Commission (865-00)

Name of Agency					
TYPE OF FEE AND NAME OF VENDOR	Retired w/ PERS	(1) Actual Expenses FY Ending June 30, 2024	(2) Estimated Expenses FY Ending June 30, 2025	(3) Requested Expenses FY Ending June 30, 2026	Fund Source
ERRET JAMES/arts education consultant <i>Comp. Rate: 500 for contractual work</i>		500	500	500	4410800000
EVENT WORKS LLC/event management <i>Comp. Rate: 3,500 for contractual work</i>		3,500	3,500	3,500	2286500000
EVENT WORKS LLC/event management <i>Comp. Rate: 2,000 for contractual work</i>		2,000	2,000	2,000	2286500000
EVENT WORKS LLC/event management <i>Comp. Rate: 4,000 for contractual work</i>		4,000	4,000	4,000	2286500000
EVENT WORKS LLC/event management <i>Comp. Rate: 4,500 for contractual work</i>		4,500	4,500	4,500	2286500000
EVENT WORKS LLC/event management <i>Comp. Rate: 2,000 for contractual work</i>		2,000	2,000	2,000	2286500000
EVENT WORKS LLC/event management <i>Comp. Rate: 10000 for contractual work</i>			10,000	10,000	5386500000
EVENT WORKS LLC/GAA Management <i>Comp. Rate: 2,000 for contractual work</i>		2,000	2,000	2,000	2286500000
EVENT WORKS LLC/State Arts Conference Manager <i>Comp. Rate: 2,000 for contractual work</i>		2,000	2,000	2,000	4410800000
EVENT WORKS LLC/State Arts Conference Manager <i>Comp. Rate: 2,000 for contractual work</i>		2,000	2,000	2,000	4410800000
Event Works/State Arts Conference Planner <i>Comp. Rate: 2000 for contractual work</i>		2,000			4410800000
EXODUS OKTAVIA BROWNLOW/grant panelist <i>Comp. Rate: 250 for contractual work</i>		250	250	250	2286500000
EXODUS OKTAVIA BROWNLOW/state arts conference presenter <i>Comp. Rate: 500 for contractual work</i>		500	500	500	5386500000
fiscal trainer/fiscal operations trainer <i>Comp. Rate: 15000 per contract</i>			15,000	15,000	2286500000
FRANCINE THOMAS/grant panelist <i>Comp. Rate: 150 for contractual work</i>		150	150	150	2286500000
GAIL MORTON/arts education consultant <i>Comp. Rate: 2,200 for contractual work</i>		2,200	2,200	2,200	4410800000
GAIL MORTON/arts education consultant <i>Comp. Rate: 1,100 for contractual work</i>		1,100	1,100	1,100	3386500000
GAVIN WIGGINSON/arts education consultant <i>Comp. Rate: 350 for contractual work</i>		350	350	350	4410800000
GINGER S. HUEBNER/arts education consultant <i>Comp. Rate: 1,500 for contractual work</i>		1,500	1,500	1,500	4410800000
GREGORY ALAN JOHNSON/grant panelist <i>Comp. Rate: 200 for contractual work</i>		200	200	200	2286500000
HAPAX CREATIVE LLC/arts education consultant <i>Comp. Rate: 387 for contractual work</i>		388	388	388	4410800000
HAPAX CREATIVE LLC/arts education consultant <i>Comp. Rate: 250 for contractual work</i>		250	250	250	4410800000
HAPAX CREATIVE LLC/arts education consultant <i>Comp. Rate: 225 for contractual work</i>		225	225	225	4410800000

FEES, PROFESSIONAL AND OTHER SERVICES

Arts Commission (865-00)

Name of Agency

TYPE OF FEE AND NAME OF VENDOR	Retired w/ PERS	(1) Actual Expenses FY Ending June 30, 2024	(2) Estimated Expenses FY Ending June 30, 2025	(3) Requested Expenses FY Ending June 30, 2026	Fund Source
HAPAX CREATIVE LLC/arts education consultant <i>Comp. Rate: 175 for contractual work</i>		175	175	175	4410800000
HAPAX CREATIVE LLC/arts education consultant <i>Comp. Rate: 287 for contractual work</i>		288	288	288	4410800000
HAPAX CREATIVE LLC/arts education consultant <i>Comp. Rate: 262 for contractual work</i>		263	263	263	4410800000
Hapax Creative/Summer Institute Support <i>Comp. Rate: 275 for contractual work</i>		275			4410800000
HECTOR BOLDO/state arts conference panelist <i>Comp. Rate: 100 for contractual work</i>		100	100	100	5386500000
HEDERMAN BROTHERS/awards program designer <i>Comp. Rate: 825 for contractual work</i>		825	825	825	2286500000
HEDERMAN BROTHERS/business card designer <i>Comp. Rate: 133 for contractual work</i>		133	133	133	2286500000
HEDERMAN BROTHERS/governor's arts awards ticket designer <i>Comp. Rate: 147 for contractual work</i>		147	147	147	2286500000
HEDERMAN BROTHERS/invitation designer <i>Comp. Rate: 1,244 for contractual work</i>		1,244	1,244	1,244	2286500000
HEDERMAN BROTHERS/poster designer <i>Comp. Rate: 418 for contractual work</i>		418	418	418	2286500000
HEDERMAN BROTHERS/vip tick designer <i>Comp. Rate: 154 for contractual work</i>		154	154	154	2286500000
IDA BEA TOMLIN/grant panelist <i>Comp. Rate: 250 for contractual work</i>		250	250	250	2286500000
IHEOMA NWACHUKWU/grant panelist <i>Comp. Rate: 250 for contractual work</i>		250	250	250	2286500000
J. JANICE COLEMAN/grant panelist <i>Comp. Rate: 250 for contractual work</i>		250	250	250	2286500000
J. JANICE COLEMAN/state arts conference panelist <i>Comp. Rate: 100 for contractual work</i>		100	100	100	5386500000
JACKSON IRISH DANCERS/state arts conference performer <i>Comp. Rate: 500 for contractual work</i>		500	500	500	5386500000
JACKSON LIFESIGNS INC/interpreter <i>Comp. Rate: 110 for contractual work</i>		110	110	110	2286500000
JAMIE MAXIMUS WRIGHT/state arts conference presenter <i>Comp. Rate: 500 for contractual work</i>		500	500	500	5386500000
JASMINE WILLIAMS/ms folklife contributor <i>Comp. Rate: 500 for contractual work</i>		500	500	500	5386500000
JASON THOMPSON/Poetry Outloud judge <i>Comp. Rate: 150 for contractual work</i>		150	150	150	5386500000
JENNIFER MANN/grant panelist <i>Comp. Rate: 150 for contractual work</i>		150	150	150	2286500000
JENNIFER MARIE MIZENKO/grant panelist <i>Comp. Rate: 250 for contractual work</i>		250	250	250	2286500000
JENNIFER MICHELLE SIMMONS/arts education consultant <i>Comp. Rate: 400 for contractual work</i>		400	400	400	4410800000

FEES, PROFESSIONAL AND OTHER SERVICES

Arts Commission (865-00)

Name of Agency

TYPE OF FEE AND NAME OF VENDOR	Retired w/ PERS	(1) Actual Expenses FY Ending June 30, 2024	(2) Estimated Expenses FY Ending June 30, 2025	(3) Requested Expenses FY Ending June 30, 2026	Fund Source
JESSE JOHNSON/state arts conference photographer <i>Comp. Rate: 750 for contractual work</i>		750	750	750	5386500000
JESSE JOHNSON/summer institute photographer <i>Comp. Rate: 450 for contractual work</i>		450	450	450	3386500000
Jolly Hayward/Summer Institute Presenter <i>Comp. Rate: 1000 for contractual work</i>		1,000			4410800000
JONATHAN ALEXANDER-TURNER/grant panelist <i>Comp. Rate: 300 for contractual work</i>		300	300	300	2286500000
JULIA MORTYAKOVA/grant panelist <i>Comp. Rate: 250 for contractual work</i>		250	250	250	2286500000
JUSTIN ARCHER BURCH/grant panelist <i>Comp. Rate: 200 for contractual work</i>		200	200	200	2286500000
K12 Crypto Inc/Summer Institute Presenter <i>Comp. Rate: 5000 for contractual work</i>		5,000			4410800000
Katherine Brown/arts education consultant <i>Comp. Rate: 175 for contractual work</i>		175			4410800000
KATHERINE BROWN/arts education consultant <i>Comp. Rate: 300 for contractual work</i>		300	300	300	4410800000
KATHERINE BROWN/arts education consultant <i>Comp. Rate: 175 for contractual work</i>		175	175	175	4410800000
KATHERINE BROWN/arts education consultant <i>Comp. Rate: 118 for contractual work</i>		119	119	119	4410800000
KATHERINE BROWN/arts education consultant <i>Comp. Rate: 275 for contractual work</i>		275	275	275	4410800000
KATHERINE BROWN/arts education consultant <i>Comp. Rate: 168 for contractual work</i>		169	169	169	4410800000
KATHERINE BROWN/arts education consultant <i>Comp. Rate: 118 for contractual work</i>		119	119	119	4410800000
KATHERINE BROWN/arts education consultant <i>Comp. Rate: 462 for contractual work</i>		463	463	463	4410800000
KATHERINE BROWN/arts education consultant <i>Comp. Rate: 112 for contractual work</i>		113	113	113	4410800000
KATHERINE BROWN/arts education consultant <i>Comp. Rate: 893 for contractual work</i>		894	894	894	4410800000
KATHERINE BROWN/arts education consultant <i>Comp. Rate: 1,268 for contractual work</i>		1,269	1,269	1,269	4410800000
KATHERINE BROWN/arts education consultant <i>Comp. Rate: 181 for contractual work</i>		181	181	181	4410800000
KATHERINE BROWN/Poetry Outloud coordinator <i>Comp. Rate: 1,756 for contractual work</i>		1,756	1,756	1,756	5386500000
KATHERINE BROWN/Poetry Outloud coordinator <i>Comp. Rate: 2,137 for contractual work</i>		2,138	2,138	2,138	5386500000
KATHERINE BROWN/Poetry Outloud coordinator <i>Comp. Rate: 2,081 for contractual work</i>		2,081	2,081	2,081	5386500000
KATHERINE BROWN/Poetry Outloud coordinator <i>Comp. Rate: 2,387 for contractual work</i>		2,388	2,388	2,388	5386500000

FEES, PROFESSIONAL AND OTHER SERVICES

Arts Commission (865-00)

Name of Agency

TYPE OF FEE AND NAME OF VENDOR	Retired w/ PERS	(1) Actual Expenses FY Ending June 30, 2024	(2) Estimated Expenses FY Ending June 30, 2025	(3) Requested Expenses FY Ending June 30, 2026	Fund Source
KATHERINE BROWN/Poetry Outloud coordinator <i>Comp. Rate: 1,937 for contractual work</i>		1,938	1,938	1,938	5386500000
KATHERINE BROWN/Poetry Outloud coordinator <i>Comp. Rate: 462 for contractual work</i>		463	463	463	5386500000
KATHERINE BROWN/Poetry Outloud coordinator <i>Comp. Rate: 325 for contractual work</i>		325	325	325	5386500000
KATHERINE BROWN/Poetry Outloud coordinator <i>Comp. Rate: 3,606 for contractual work</i>		3,606	3,606	3,606	5386500000
KATHERINE BROWN/Poetry Outloud coordinator <i>Comp. Rate: 1,812 for contractual work</i>		1,813	1,813	1,813	5386500000
KATHERINE BROWN/Poetry Outloud coordinator <i>Comp. Rate: 1,950 for contractual work</i>		1,950	1,950	1,950	5386500000
KATHERINE JAMIESON STAFFORD/arts education consultant <i>Comp. Rate: 100 for contractual work</i>		100	100	100	4410800000
KATHERINE JAMIESON STAFFORD/grant panelist <i>Comp. Rate: 150 for contractual work</i>		150	150	150	2286500000
KATHERINE ROSS/grant panelist <i>Comp. Rate: 250 for contractual work</i>		250	250	250	2286500000
KATHRYN ANNE GURTLER WILSON/arts education consultant <i>Comp. Rate: 300 for contractual work</i>		300	300	300	4410800000
KATHRYN ANNE GURTLER WILSON/arts education consultant <i>Comp. Rate: 425 for contractual work</i>		425	425	425	4410800000
KATHRYN ANNE GURTLER WILSON/grant panelist <i>Comp. Rate: 200 for contractual work</i>		200	200	200	2286500000
KATHRYN ANNE GURTLER WILSON/social media coordinator <i>Comp. Rate: 475 for contractual work</i>		475	475	475	4410800000
KATHRYN REED/grant panelist <i>Comp. Rate: 250 for contractual work</i>		250	250	250	2286500000
KERI HORN/arts education consultant <i>Comp. Rate: 550 for contractual work</i>		550	550	550	3386500000
KERI HORN/arts education consultant <i>Comp. Rate: 600 for contractual work</i>		600	600	600	3386500000
KERI HORN/state arts conference presenter <i>Comp. Rate: 500 for contractual work</i>		500	500	500	5386500000
KIMBERLY GENTRY NATURE NURTURE LLC/arts education <i>Comp. Rate: 162 for contractual work</i>		162	162	162	4410800000
KINETIC ETCHINGS/arts education consultant <i>Comp. Rate: 500 for contractual work</i>		500	500	500	4410800000
KINETIC ETCHINGS/summer institute consultant <i>Comp. Rate: 1,500 for contractual work</i>		1,500	1,500	1,500	4410800000
KOBE VAN SOMEREN KOBEVEE MEDIA/videographer <i>Comp. Rate: 1,200 for contractual work</i>		1,200	1,200	1,200	2286500000
KOONLABA AMANDA/arts education consultant <i>Comp. Rate: 3,360 for contractual work</i>		3,360	3,360	3,360	4410800000
KOONLABA AMANDA/arts education consultant <i>Comp. Rate: 3,360 for contractual work</i>		3,360	3,360	3,360	4410800000

FEES, PROFESSIONAL AND OTHER SERVICES

Arts Commission (865-00)

Name of Agency

TYPE OF FEE AND NAME OF VENDOR	Retired w/ PERS	(1) Actual Expenses FY Ending June 30, 2024	(2) Estimated Expenses FY Ending June 30, 2025	(3) Requested Expenses FY Ending June 30, 2026	Fund Source
KOONLABA AMANDA/arts education consultant <i>Comp. Rate: 4,200 for contractual work</i>		4,200	4,200	4,200	4410800000
KOONLABA AMANDA/arts education consultant <i>Comp. Rate: 4,200 for contractual work</i>		4,200	4,200	4,200	4410800000
KOONLABA AMANDA/arts education consultant <i>Comp. Rate: 2,520 for contractual work</i>		2,520	2,520	2,520	4410800000
KOONLABA AMANDA/arts education consultant <i>Comp. Rate: 4,480 for contractual work</i>		4,480	4,480	4,480	4410800000
KOONLABA AMANDA/arts education consultant <i>Comp. Rate: 3,164 for contractual work</i>		3,164	3,164	3,164	4410800000
KOONLABA AMANDA/arts education consultant <i>Comp. Rate: 3,360 for contractual work</i>		3,360	3,360	3,360	4410800000
KOONLABA AMANDA/arts education consultant <i>Comp. Rate: 3,360 for contractual work</i>		3,360	3,360	3,360	4410800000
KOONLABA AMANDA/arts education consultant <i>Comp. Rate: 3,360 for contractual work</i>		3,360	3,360	3,360	4410800000
KOONLABA AMANDA/arts education consultant <i>Comp. Rate: 4,200 for contractual work</i>		4,200	4,200	4,200	4410800000
KRISTEN LEY LLC THIMBLEPRESS/arts education consultant <i>Comp. Rate: 1,400 for contractual work</i>		1,400	1,400	1,400	3386500000
KRISTYN MARTZ/arts education consultant <i>Comp. Rate: 400 for contractual work</i>		400	400	400	3386500000
LANDON BRYANT/state arts conference presenter <i>Comp. Rate: 500 for contractual work</i>		500	500	500	5386500000
LANGSTON COLLIN WILKINS/grant panelist <i>Comp. Rate: 200 for contractual work</i>		200	200	200	2286500000
LATOYA DANEILS-WASHINGTON/grant panelist <i>Comp. Rate: 250 for contractual work</i>		250	250	250	2286500000
LAUREN POWELL/grant panelist <i>Comp. Rate: 300 for contractual work</i>		300	300	300	2286500000
LAUREN POWELL/grant panelist <i>Comp. Rate: 300 for contractual work</i>		300	300	300	2286500000
LAWSON KING/state arts conference panelist <i>Comp. Rate: 100 for contractual work</i>		100	100	100	5386500000
LEAD: AN EDUCATIONAL CONSULTING GRO/arts education <i>Comp. Rate: 400 for contractual work</i>		400	400	400	4410800000
LEAD: AN EDUCATIONAL CONSULTING GRO/arts education <i>Comp. Rate: 400 for contractual work</i>		400	400	400	4410800000
LESLIE LEE/arts education consultant <i>Comp. Rate: 2,637 for contractual work</i>		2,638	2,638	2,638	4410800000
LESLIE LEE/arts education consultant <i>Comp. Rate: 2,000 for contractual work</i>		2,000	2,000	2,000	4410800000
LESLIE LEE/arts education consultant <i>Comp. Rate: 1,762 for contractual work</i>		1,763	1,763	1,763	4410800000
LESLIE LEE/arts education consultant <i>Comp. Rate: 737 for contractual work</i>		738	738	738	4410800000

FEES, PROFESSIONAL AND OTHER SERVICES

Arts Commission (865-00)

Name of Agency

TYPE OF FEE AND NAME OF VENDOR	Retired w/ PERS	(1) Actual Expenses FY Ending June 30, 2024	(2) Estimated Expenses FY Ending June 30, 2025	(3) Requested Expenses FY Ending June 30, 2026	Fund Source
LESLIE LEE/arts education consultant <i>Comp. Rate: 875 for contractual work</i>		875	875	875	4410800000
LESLIE LEE/arts education consultant <i>Comp. Rate: 700 for contractual work</i>		700	700	700	4410800000
LESLIE LEE/arts education consultant <i>Comp. Rate: 2,525 for contractual work</i>		2,525	2,525	2,525	4410800000
LESLIE LEE/arts education consultant <i>Comp. Rate: 1,000 for contractual work</i>		1,000	1,000	1,000	3386500000
LESLIE LEE/arts education consultant <i>Comp. Rate: 1,550 for contractual work</i>		1,550	1,550	1,550	4410800000
LESLIE LEE/arts education consultant <i>Comp. Rate: 500 for contractual work</i>		500	500	500	4410800000
LESLIE LEE/arts education consultant <i>Comp. Rate: 2,075 for contractual work</i>		2,075	2,075	2,075	4410800000
LESLIE LEE/arts education consultant <i>Comp. Rate: 1,962 for contractual work</i>		1,963	1,963	1,963	4410800000
Leslie Lee/arts education consultant <i>Comp. Rate: 1575 for contractual work</i>		1,575			4410800000
LISA MCMURTRAY/ask a professional presenter <i>Comp. Rate: 350 for contractual work</i>		350	350	350	2286500000
LUCY ELIZABETH HETRICK/graphic designer <i>Comp. Rate: 500 for contractual work</i>		500	500	500	2286500000
LUCY ELIZABETH HETRICK/graphic designer <i>Comp. Rate: 3,000 for contractual work</i>		3,000	3,000	3,000	2286500000
LUCY ELIZABETH HETRICK/graphic designer <i>Comp. Rate: 500 for contractual work</i>		500	500	500	2286500000
LUCY ELIZABETH HETRICK/graphic designer <i>Comp. Rate: 600 for contractual work</i>		600	600	600	4410800000
LUCY ELIZABETH HETRICK/graphic designer <i>Comp. Rate: 2,500 for contractual work</i>		2,500	2,500	2,500	4410800000
LUCY ELIZABETH HETRICK/graphic designer <i>Comp. Rate: 3,000 for contractual work</i>		3,000	3,000	3,000	5386500000
MAD GENIUS INC/website developer <i>Comp. Rate: 3,230 for contractual work</i>		3,230	3,230	3,230	2286500000
MADISON TALLEY/grant panelist <i>Comp. Rate: 300 for contractual work</i>		300	300	300	2286500000
Maisel Elaine Leigh/BFA Admin <i>Comp. Rate: 2240 for contractual work</i>		2,240			2286500000
MAISEL ELAINE LEIGH/coder for fellowship applications <i>Comp. Rate: 2,000 for contractual work</i>		2,000	2,000	2,000	2286500000
MAISEL ELAINE LEIGH/progam administration <i>Comp. Rate: 2,240 for contractual work</i>		2,240	2,240	2,240	2286500000
MAISEL ELAINE LEIGH/progam administration <i>Comp. Rate: 2,240 for contractual work</i>		2,240	2,240	2,240	2286500000
MALONE MARK HUGH/arts education consultant <i>Comp. Rate: 800 for contractual work</i>		800	800	800	3386500000

FEES, PROFESSIONAL AND OTHER SERVICES

Arts Commission (865-00)

Name of Agency

TYPE OF FEE AND NAME OF VENDOR	Retired w/ PERS	(1) Actual Expenses FY Ending June 30, 2024	(2) Estimated Expenses FY Ending June 30, 2025	(3) Requested Expenses FY Ending June 30, 2026	Fund Source
Manual Herrera/arts education consultant <i>Comp. Rate: 2000 for contractual work</i>		2,000			4410800000
MARCELLUS HARPER/BFA panelist <i>Comp. Rate: 300 for contractual work</i>		300	300	300	2286500000
MARCUS A CARR/MWS summer institute dj <i>Comp. Rate: 1,500 for contractual work</i>		1,500	1,500	1,500	3386500000
MARIA DANIELLA OROPEZA GALLIANO/governor's arts <i>Comp. Rate: 500 for contractual work</i>		500	500	500	2286500000
MARK TALLEY/grant panelist <i>Comp. Rate: 300 for contractual work</i>		300	300	300	2286500000
MARS & STEEL INC MARS & STEEL AWARDS/Engraving <i>Comp. Rate: 126 for contractual work</i>		127	127	127	2286500000
MARY ANN LOESCH/arts education consultant <i>Comp. Rate: 2,500 for contractual work</i>		2,500	2,500	2,500	3386500000
MARY FRANCES DICKIE/grant panelist <i>Comp. Rate: 250 for contractual work</i>		250	250	250	2286500000
MARY FRANCES MASSEY/arts education consultant <i>Comp. Rate: 2,500 for contractual work</i>		2,500	2,500	2,500	4410800000
MARY FRANCES MASSEY/arts education consultant <i>Comp. Rate: 1,000 for contractual work</i>		1,000	1,000	1,000	3386500000
MATHILDE FRANCES LIND/social media editor <i>Comp. Rate: 450 for contractual work</i>		450	450	450	5386500000
MATHILDE FRANCES LIND/social media editor <i>Comp. Rate: 300 for contractual work</i>		300	300	300	5386500000
MATHILDE FRANCES LIND/social media editor <i>Comp. Rate: 125 for contractual work</i>		125	125	125	5386500000
MATHILDE FRANCES LIND/social media editor <i>Comp. Rate: 325 for contractual work</i>		325	325	325	5386500000
MATTHEW GRANT/arts education consultant <i>Comp. Rate: 300 for contractual work</i>		300	300	300	3386500000
MCINNIS C LIEGH/Poetry Outloud judge <i>Comp. Rate: 150 for contractual work</i>		150	150	150	5386500000
MELANIE DEAS/grant panelist <i>Comp. Rate: 250 for contractual work</i>		250	250	250	2286500000
MELANIE DEAS/state arts conference panelist <i>Comp. Rate: 100 for contractual work</i>		100	100	100	5386500000
MELANIE DEAS/tac workshop presenter <i>Comp. Rate: 100 for contractual work</i>		100	100	100	4410800000
MELODY MOODY THORTIS/state arts conference panelist <i>Comp. Rate: 100 for contractual work</i>		100	100	100	5386500000
Meredith Gonzalez-Fernandez/Summer Institute Presenter <i>Comp. Rate: 2457 for contractual work</i>		2,457			4410800000
MEREDITH H GONZALEZ-FERNANDEZ/arts education <i>Comp. Rate: 2,242 for contractual work</i>		2,243	2,243	2,243	4410800000
MEREDITH H GONZALEZ-FERNANDEZ/arts education <i>Comp. Rate: 2,561 for contractual work</i>		2,561	2,561	2,561	4410800000

FEES, PROFESSIONAL AND OTHER SERVICES

Arts Commission (865-00)

Name of Agency

TYPE OF FEE AND NAME OF VENDOR	Retired w/ PERS	(1) Actual Expenses FY Ending June 30, 2024	(2) Estimated Expenses FY Ending June 30, 2025	(3) Requested Expenses FY Ending June 30, 2026	Fund Source
MEREDITH H GONZALEZ-FERNANDEZ/arts education <i>Comp. Rate: 1,443 for contractual work</i>		1,443	1,443	1,443	4410800000
MEREDITH H GONZALEZ-FERNANDEZ/arts education <i>Comp. Rate: 1,742 for contractual work</i>		1,742	1,742	1,742	4410800000
MEREDITH H GONZALEZ-FERNANDEZ/arts education <i>Comp. Rate: 897 for contractual work</i>		897	897	897	4410800000
MEREDITH H GONZALEZ-FERNANDEZ/arts education <i>Comp. Rate: 1,573 for contractual work</i>		1,573	1,573	1,573	4410800000
MEREDITH H GONZALEZ-FERNANDEZ/arts education <i>Comp. Rate: 1,163 for contractual work</i>		1,164	1,164	1,164	4410800000
MEREDITH H GONZALEZ-FERNANDEZ/arts education <i>Comp. Rate: 2,099 for contractual work</i>		2,100	2,100	2,100	4410800000
MEREDITH H GONZALEZ-FERNANDEZ/arts education <i>Comp. Rate: 1,033 for contractual work</i>		1,034	1,034	1,034	4410800000
MEREDITH H GONZALEZ-FERNANDEZ/arts education <i>Comp. Rate: 1,976 for contractual work</i>		1,976	1,976	1,976	4410800000
Michael Hernandez/Summer Institute Presenter <i>Comp. Rate: 5000 for contractual work</i>		5,000			4410800000
MICHAEL HOLLAND/grant panelist <i>Comp. Rate: 250 for contractual work</i>		250	250	250	2286500000
Monica Hill/arts education consultant <i>Comp. Rate: 250 for contractual work</i>		250			4410800000
MONICA SANCHEZ/grant panelist <i>Comp. Rate: 150 for contractual work</i>		150	150	150	2286500000
MORGAN KATHRYN BERGERON/arts education consultant <i>Comp. Rate: 2,087 for contractual work</i>		2,088	2,088	2,088	4410800000
MORGAN KATHRYN BERGERON/arts education consultant <i>Comp. Rate: 1,250 for contractual work</i>		1,250	1,250	1,250	4410800000
MORGAN KATHRYN BERGERON/arts education consultant <i>Comp. Rate: 1,550 for contractual work</i>		1,550	1,550	1,550	4410800000
MORGAN KATHRYN BERGERON/arts education consultant <i>Comp. Rate: 2,493 for contractual work</i>		2,494	2,494	2,494	4410800000
MORGAN KATHRYN BERGERON/arts education consultant <i>Comp. Rate: 2,775 for contractual work</i>		2,775	2,775	2,775	4410800000
MORGAN KATHRYN BERGERON/arts education consultant <i>Comp. Rate: 2,343 for contractual work</i>		2,344	2,344	2,344	4410800000
MORGAN KATHRYN BERGERON/arts education consultant <i>Comp. Rate: 1,712 for contractual work</i>		1,713	1,713	1,713	4410800000
MORGAN KATHRYN BERGERON/arts education consultant <i>Comp. Rate: 2,243 for contractual work</i>		2,244	2,244	2,244	4410800000
MORGAN KATHRYN BERGERON/arts education consultant <i>Comp. Rate: 2,443 for contractual work</i>		2,444	2,444	2,444	4410800000
MORGAN KATHRYN BERGERON/arts education consultant <i>Comp. Rate: 2,662 for contractual work</i>		2,663	2,663	2,663	4410800000
MORGAN KATHRYN BERGERON/arts education consultant <i>Comp. Rate: 2,850 for contractual work</i>		2,850	2,850	2,850	4410800000

FEES, PROFESSIONAL AND OTHER SERVICES

Arts Commission (865-00)

Name of Agency					
TYPE OF FEE AND NAME OF VENDOR	Retired w/ PERS	(1) Actual Expenses FY Ending June 30, 2024	(2) Estimated Expenses FY Ending June 30, 2025	(3) Requested Expenses FY Ending June 30, 2026	Fund Source
Morgan Kathryn Bergeron/Summer Institute Presenter <i>Comp. Rate: 2106 for contractual work</i>		2,106			4410800000
MOVESPEAKSPIN/arts education consultant <i>Comp. Rate: 4,250 for contractual work</i>		4,250	4,250	4,250	4410800000
MS HERITAGE TRUST/grant panelist <i>Comp. Rate: 300 for contractual work</i>		300	300	300	2286500000
MS LOWER DELTA PARTNERSHIP GREAT DELTA BEAR <i>Comp. Rate: 2,500 for contractual work</i>		2,500	2,500	2,500	5386500000
NEBLETTTS FRAME OUTLETS INC/framer <i>Comp. Rate: 123 for contractual work</i>		123	123	123	2286500000
new folklife contractors/folklife research <i>Comp. Rate: 500 to 2500 per contract</i>			15,000	15,000	5386500000
new graphic designer/graphic design <i>Comp. Rate: 10000 per contract</i>			10,000	10,000	2286500000
NICOLAS CRISAFULLI/grant panelist <i>Comp. Rate: 250 for contractual work</i>		250	250	250	2286500000
NICOLE MUSGRAVE/grant panelist <i>Comp. Rate: 150 for contractual work</i>		150	150	150	2286500000
NICOLE MUSGRAVE/ms folklife writer <i>Comp. Rate: 500 for contractual work</i>		500	500	500	5386500000
NORFOLK SHERRY/arts education consultant <i>Comp. Rate: 600 for contractual work</i>		600	600	600	4410800000
NORFOLK SHERRY/arts education consultant <i>Comp. Rate: 300 for contractual work</i>		300	300	300	4410800000
NORTH MS EDUCATION CONSORTIUM/training consultant <i>Comp. Rate: 1,800 for contractual work</i>		1,800	1,800	1,800	4410800000
NORTH MS EDUCATION CONSORTIUM/training consultant <i>Comp. Rate: 1,000 for contractual work</i>		1,000	1,000	1,000	4410800000
OLIVIA THOMAS RISING STARS FIFE AND DRUM <i>Comp. Rate: 920 for contractual work</i>		920	920	920	2286500000
OLIVIA THOMAS RISING STARS FIFE AND DRUM <i>Comp. Rate: 500 for contractual work</i>		500	500	500	5386500000
PACESETTER GALLERY PACESETTER GALLERY LLC/state <i>Comp. Rate: 100 for contractual work</i>		100	100	100	5386500000
PACESETTER GALLERY PACESETTER GALLERY LLC/state <i>Comp. Rate: 100 for contractual work</i>		100	100	100	5386500000
PENNY ANGELA MACK/arts education consultant <i>Comp. Rate: 4,788 for contractual work</i>		4,788	4,788	4,788	4410800000
PENNY ANGELA MACK/arts education consultant <i>Comp. Rate: 4,760 for contractual work</i>		4,760	4,760	4,760	4410800000
PENNY ANGELA MACK/arts education consultant <i>Comp. Rate: 4,830 for contractual work</i>		4,830	4,830	4,830	4410800000
PENNY ANGELA MACK/arts education consultant <i>Comp. Rate: 4,634 for contractual work</i>		4,634	4,634	4,634	4410800000
PENNY ANGELA MACK/arts education consultant <i>Comp. Rate: 4,375 for contractual work</i>		4,375	4,375	4,375	4410800000

FEES, PROFESSIONAL AND OTHER SERVICES

Arts Commission (865-00)

Name of Agency					
TYPE OF FEE AND NAME OF VENDOR	Retired w/ PERS	(1) Actual Expenses FY Ending June 30, 2024	(2) Estimated Expenses FY Ending June 30, 2025	(3) Requested Expenses FY Ending June 30, 2026	Fund Source
PENNY ANGELA MACK/arts education consultant <i>Comp. Rate: 4,004 for contractual work</i>		4,004	4,004	4,004	4410800000
PENNY ANGELA MACK/arts education consultant <i>Comp. Rate: 4,466 for contractual work</i>		4,466	4,466	4,466	4410800000
PENNY ANGELA MACK/arts education consultant <i>Comp. Rate: 4,732 for contractual work</i>		4,732	4,732	4,732	4410800000
PENNY ANGELA MACK/arts education consultant <i>Comp. Rate: 4,480 for contractual work</i>		4,480	4,480	4,480	4410800000
PENNY ANGELA MACK/arts education consultant <i>Comp. Rate: 4,438 for contractual work</i>		4,438	4,438	4,438	4410800000
PENNY ANGELA MACK/arts education consultant <i>Comp. Rate: 4,942 for contractual work</i>		4,942	4,942	4,942	4410800000
Penny Angela Mack/Summer Institute contractor <i>Comp. Rate: 4774 for contractual work</i>		4,774			4410800000
PHILLIP ROLLINS OFFBEAT ART LLC/grant panelist <i>Comp. Rate: 200 for contractual work</i>		200	200	200	2286500000
Poetry Out Loud recruiters/recruiting participants <i>Comp. Rate: 2000 to 5000 per contract</i>			10,000	10,000	5386500000
PREMIER SPEAKERS BUREAU INC 109 INTERNATIONAL <i>Comp. Rate: 10,500 for contractual work</i>		10,500	10,500	10,500	3386500000
QUALITY PRINTING INC MAHAFFEYS' QUALITY <i>Comp. Rate: 175 for contractual work</i>		175	175	175	2286500000
QUALITY PRINTING INC MAHAFFEYS' QUALITY <i>Comp. Rate: 140 for contractual work</i>		140	140	140	2286500000
QUALITY PRINTING INC MAHAFFEYS' QUALITY <i>Comp. Rate: 140 for contractual work</i>		140	140	140	2286500000
RACHEL DANGERMOND/grant panelist <i>Comp. Rate: 250 for contractual work</i>		250	250	250	2286500000
RACHEL FORD/grant panelist <i>Comp. Rate: 250 for contractual work</i>		250	250	250	2286500000
RASHELL SMITH-SPEARS/grant panelist <i>Comp. Rate: 200 for contractual work</i>		200	200	200	2286500000
RAVIN JERRILYN HILL LOVETT/state arts conference presenter <i>Comp. Rate: 500 for contractual work</i>		500	500	500	5386500000
REBECCA CHADWICK/arts education consultant <i>Comp. Rate: 641 for contractual work</i>		641	641	641	3386500000
REGINALD CABICO/arts education consultant <i>Comp. Rate: 4,200 for contractual work</i>		4,200	4,200	4,200	3386500000
REGINALD CABICO/POL clinician <i>Comp. Rate: 600 for contractual work</i>		600	600	600	5386500000
RICHARD MARCELLUS/arts education consultant <i>Comp. Rate: 837 for contractual work</i>		838	838	838	3386500000
RICHELLE PUTNAM/arts education consultant <i>Comp. Rate: 400 for contractual work</i>		400	400	400	4410800000
RICHELLE PUTNAM/arts education consultant <i>Comp. Rate: 200 for contractual work</i>		200	200	200	4410800000

FEES, PROFESSIONAL AND OTHER SERVICES

Arts Commission (865-00)

Name of Agency

TYPE OF FEE AND NAME OF VENDOR	Retired w/ PERS	(1) Actual Expenses FY Ending June 30, 2024	(2) Estimated Expenses FY Ending June 30, 2025	(3) Requested Expenses FY Ending June 30, 2026	Fund Source
RICHELLE PUTNAM/grant panelist <i>Comp. Rate: 250 for contractual work</i>		250	250	250	2286500000
RICHELLE PUTNAM/POL clinician <i>Comp. Rate: 250 for contractual work</i>		250	250	250	5386500000
ROB DETJEN/arts education consultant <i>Comp. Rate: 4,751 for contractual work</i>		4,752	4,752	4,752	4410800000
ROB DETJEN/arts education consultant <i>Comp. Rate: 2,600 for contractual work</i>		2,600	2,600	2,600	4410800000
ROB DETJEN/arts education consultant <i>Comp. Rate: 2,366 for contractual work</i>		2,366	2,366	2,366	4410800000
ROB DETJEN/arts education consultant <i>Comp. Rate: 3,081 for contractual work</i>		3,081	3,081	3,081	4410800000
ROB DETJEN/arts education consultant <i>Comp. Rate: 1,531 for contractual work</i>		1,531	1,531	1,531	4410800000
ROB DETJEN/arts education consultant <i>Comp. Rate: 3,893 for contractual work</i>		3,894	3,894	3,894	4410800000
ROB DETJEN/arts education consultant <i>Comp. Rate: 3,367 for contractual work</i>		3,367	3,367	3,367	4410800000
ROB DETJEN/arts education consultant <i>Comp. Rate: 3,003 for contractual work</i>		3,003	3,003	3,003	4410800000
ROB DETJEN/arts education consultant <i>Comp. Rate: 3,633 for contractual work</i>		3,634	3,634	3,634	4410800000
ROB DETJEN/arts education consultant <i>Comp. Rate: 2,496 for contractual work</i>		2,496	2,496	2,496	4410800000
ROB DETJEN/arts education consultant <i>Comp. Rate: 2,320 for contractual work</i>		2,321	2,321	2,321	4410800000
Rob Detjen/Summer Institute Presenter <i>Comp. Rate: 3900 for contractual work</i>		3,900			4410800000
ROBERT FRANZ ARNOLD/ask a professional presenter <i>Comp. Rate: 350 for contractual work</i>		350	350	350	2286500000
ROBERT HARRISON/grant panelist <i>Comp. Rate: 250 for contractual work</i>		250	250	250	2286500000
ROBERT HOROWITZ/arts education consultant <i>Comp. Rate: 6,875 for contractual work</i>		6,875	6,875	6,875	4410800000
ROBERT HOROWITZ/arts education consultant <i>Comp. Rate: 6,875 for contractual work</i>		6,875	6,875	6,875	4410800000
ROBERT HOROWITZ/arts education consultant <i>Comp. Rate: 6,875 for contractual work</i>		6,875	6,875	6,875	4410800000
ROBERT HOROWITZ/arts education consultant <i>Comp. Rate: 6,875 for contractual work</i>		6,875	6,875	6,875	4410800000
Robert Horowitz/arts education consultant <i>Comp. Rate: 27500 for contractual work</i>		27,500			4410800000
ROBERT S WATSON/arts education consultant <i>Comp. Rate: 1,500 for contractual work</i>		1,500	1,500	1,500	4410800000
ROBERT S WATSON/arts education consultant <i>Comp. Rate: 1,500 for contractual work</i>		1,500	1,500	1,500	4410800000

FEES, PROFESSIONAL AND OTHER SERVICES

Arts Commission (865-00)

Name of Agency

TYPE OF FEE AND NAME OF VENDOR	Retired w/ PERS	(1) Actual Expenses FY Ending June 30, 2024	(2) Estimated Expenses FY Ending June 30, 2025	(3) Requested Expenses FY Ending June 30, 2026	Fund Source
ROBERT S WATSON/arts education consultant <i>Comp. Rate: 1,500 for contractual work</i>		1,500	1,500	1,500	4410800000
ROBERT S WATSON/arts education consultant <i>Comp. Rate: 3,000 for contractual work</i>		3,000	3,000	3,000	4410800000
ROBERT WALTER COOPER/grant panelist <i>Comp. Rate: 250 for contractual work</i>		250	250	250	2286500000
ROBERTS TERRENCE/arts education consultant <i>Comp. Rate: 2,950 for contractual work</i>		2,950	2,950	2,950	4410800000
ROBERTS TERRENCE/arts education consultant <i>Comp. Rate: 2,450 for contractual work</i>		2,450	2,450	2,450	4410800000
ROBERTS TERRENCE/arts education consultant <i>Comp. Rate: 2,575 for contractual work</i>		2,575	2,575	2,575	4410800000
ROBERTS TERRENCE/arts education consultant <i>Comp. Rate: 3,225 for contractual work</i>		3,225	3,225	3,225	4410800000
ROBERTS TERRENCE/arts education consultant <i>Comp. Rate: 2,600 for contractual work</i>		2,600	2,600	2,600	4410800000
ROBERTS TERRENCE/arts education consultant <i>Comp. Rate: 3,075 for contractual work</i>		3,075	3,075	3,075	4410800000
ROBERTS TERRENCE/arts education consultant <i>Comp. Rate: 900 for contractual work</i>		900	900	900	4410800000
ROBERTS TERRENCE/arts education consultant <i>Comp. Rate: 2,512 for contractual work</i>		2,513	2,513	2,513	4410800000
ROBERTS TERRENCE/arts education consultant <i>Comp. Rate: 2,875 for contractual work</i>		2,875	2,875	2,875	4410800000
ROBERTS TERRENCE/arts education consultant <i>Comp. Rate: 3,425 for contractual work</i>		3,425	3,425	3,425	4410800000
ROBERTS TERRENCE/arts education consultant <i>Comp. Rate: 2,550 for contractual work</i>		2,550	2,550	2,550	4410800000
RORY DOYLE RORY DOYLE PHOTOGRAPHY <i>Comp. Rate: 1,970 for contractual work</i>		1,970	1,970	1,970	2286500000
ROXIE CLAYTON/arts education consultant <i>Comp. Rate: 2,000 for contractual work</i>		2,000	2,000	2,000	4410800000
ROXIE CLAYTON/arts education consultant <i>Comp. Rate: 3,000 for contractual work</i>		3,000	3,000	3,000	4410800000
RUSHING MOLLIE ROLLINS/arts education consultant <i>Comp. Rate: 765 for contractual work</i>		765	765	765	3386500000
RYAN BILES/grant panelist <i>Comp. Rate: 250 for contractual work</i>		250	250	250	2286500000
SARAH WADE/grant panelist <i>Comp. Rate: 300 for contractual work</i>		300	300	300	2286500000
SKY ROCKET PRESS/arts education consultant <i>Comp. Rate: 2,000 for contractual work</i>		2,000	2,000	2,000	4410800000
SKY ROCKET PRESS/arts education consultant <i>Comp. Rate: 4,875 for contractual work</i>		4,875	4,875	4,875	3386500000
SKY ROCKET PRESS/arts education consultant <i>Comp. Rate: 3,000 for contractual work</i>		3,000	3,000	3,000	4410800000

FEES, PROFESSIONAL AND OTHER SERVICES

Arts Commission (865-00)

Name of Agency

TYPE OF FEE AND NAME OF VENDOR	Retired w/ PERS	(1) Actual Expenses FY Ending June 30, 2024	(2) Estimated Expenses FY Ending June 30, 2025	(3) Requested Expenses FY Ending June 30, 2026	Fund Source
SKY ROCKET PRESS/grant panelist <i>Comp. Rate: 150 for contractual work</i>		150	150	150	2286500000
SKY ROCKET PRESS/POL clinician <i>Comp. Rate: 300 for contractual work</i>		300	300	300	5386500000
SOPHIA M. WOLF/state arts conference presenter <i>Comp. Rate: 500 for contractual work</i>		500	500	500	5386500000
SOUND PLUS, LLC/audio engineer <i>Comp. Rate: 2,350 for contractual work</i>		2,350	2,350	2,350	5386500000
STACEY SMITH/arts education consultant <i>Comp. Rate: 525 for contractual work</i>		525	525	525	4410800000
STACY HOWELL/arts education consultant <i>Comp. Rate: 4,767 for contractual work</i>		4,767	4,767	4,767	4410800000
STACY HOWELL/arts education consultant <i>Comp. Rate: 4,732 for contractual work</i>		4,732	4,732	4,732	4410800000
STACY HOWELL/arts education consultant <i>Comp. Rate: 4,795 for contractual work</i>		4,795	4,795	4,795	4410800000
STACY HOWELL/arts education consultant <i>Comp. Rate: 4,424 for contractual work</i>		4,424	4,424	4,424	4410800000
STACY HOWELL/arts education consultant <i>Comp. Rate: 4,375 for contractual work</i>		4,375	4,375	4,375	4410800000
STACY HOWELL/arts education consultant <i>Comp. Rate: 5,614 for contractual work</i>		5,614	5,614	5,614	4410800000
STACY HOWELL/arts education consultant <i>Comp. Rate: 4,849 for contractual work</i>		4,849	4,849	4,849	4410800000
STACY HOWELL/arts education consultant <i>Comp. Rate: 3,248 for contractual work</i>		3,248	3,248	3,248	4410800000
STACY HOWELL/arts education consultant <i>Comp. Rate: 4,900 for contractual work</i>		4,900	4,900	4,900	4410800000
STACY HOWELL/arts education consultant <i>Comp. Rate: 4,788 for contractual work</i>		4,788	4,788	4,788	4410800000
STACY HOWELL/arts education consultant <i>Comp. Rate: 4,361 for contractual work</i>		4,361	4,361	4,361	4410800000
Stacy Howell/arts education consultant <i>Comp. Rate: 1064 for contractual work</i>		1,064			4410800000
STACY HOWELL/Poetry Outloud judge <i>Comp. Rate: 150 for contractual work</i>		150	150	150	5386500000
Stacy Howell/Summer Institute EMCEE <i>Comp. Rate: 4144 for contractual work</i>		4,144			4410800000
STAGELITE SOUND LLC/sound producer <i>Comp. Rate: 6,460 for contractual work</i>		6,460	6,460	6,460	2286500000
state arts conference assistants/project assistants <i>Comp. Rate: 500 to 1000 per contract</i>			7,000	7,000	5386500000
state conference presenters/presenters <i>Comp. Rate: 1000 to 5000 per contract</i>			70,000		5386650000
STEPHEN BROWN/arts education consultant <i>Comp. Rate: 250 for contractual work</i>		250	250	250	4410800000

FEES, PROFESSIONAL AND OTHER SERVICES

Arts Commission (865-00)

Name of Agency

TYPE OF FEE AND NAME OF VENDOR	Retired w/ PERS	(1) Actual Expenses FY Ending June 30, 2024	(2) Estimated Expenses FY Ending June 30, 2025	(3) Requested Expenses FY Ending June 30, 2026	Fund Source
STEPHEN BROWN/POL State Competition musician <i>Comp. Rate: 500 for contractual work</i>		500	500	500	5386500000
STEPHEN BROWN/state arts conference panelist <i>Comp. Rate: 100 for contractual work</i>		100	100	100	5386500000
Steven Barney/arts education consultant <i>Comp. Rate: 500 for contractual work</i>		500			4410800000
STEVEN ISSAC RANDLE/POL Emcee & Host <i>Comp. Rate: 500 for contractual work</i>		500	500	500	5386500000
Taiwo Gaynor/grant panelist <i>Comp. Rate: 150 for contractual work</i>		150			2286500000
TALAMIEKA BRICE BRICE MEDIA/grant panelist <i>Comp. Rate: 150 for contractual work</i>		150	150	150	2286500000
TELENATIONS, INC. SMARTYPASS/Art Change <i>Comp. Rate: 72 for contractual work</i>		72	72	72	5386500000
TELENATIONS, INC. SMARTYPASS/Setup Fee <i>Comp. Rate: 49 for contractual work</i>		49	49	49	5386500000
Tell Agency/social media support <i>Comp. Rate: 1500 for contractual work</i>		1,500			4410800000
Terrence Roberts/Summer Institute Presenter <i>Comp. Rate: 3775 for contractual work</i>		3,775			4410800000
TEXARKANA REGIONAL ARTS & HUMANITIES <i>Comp. Rate: 3,000 for contractual work</i>		3,000	3,000	3,000	4410800000
TEXARKANA REGIONAL ARTS & HUMANITIES <i>Comp. Rate: 12,000 for contractual work</i>		12,000	12,000	12,000	4410800000
THABI MOYO/moderator <i>Comp. Rate: 100 for contractual work</i>		100	100	100	5386500000
THE TELL AGENCY/social media advisor <i>Comp. Rate: 2,200 for contractual work</i>		2,200	2,200	2,200	2286500000
THE TELL AGENCY/social media advisor <i>Comp. Rate: 2,500 for contractual work</i>		2,500	2,500	2,500	2286500000
THOMAS JULIAN RANKIN/grant panelist <i>Comp. Rate: 300 for contractual work</i>		300	300	300	2286500000
THOMAS KRISTOPHER LEE/state arts conference panelist <i>Comp. Rate: 100 for contractual work</i>		100	100	100	5386500000
TONY DAVENPORT/grant panelist <i>Comp. Rate: 150 for contractual work</i>		150	150	150	2286500000
TONYA HAYS/arts education consultant <i>Comp. Rate: 431 for contractual work</i>		431	431	431	4410800000
TONYA HAYS/arts education consultant <i>Comp. Rate: 556 for contractual work</i>		556	556	556	4410800000
TONYA HAYS/arts education consultant <i>Comp. Rate: 643 for contractual work</i>		644	644	644	4410800000
TONYA HAYS/arts education consultant <i>Comp. Rate: 987 for contractual work</i>		988	988	988	4410800000
TONYA HAYS/arts education consultant <i>Comp. Rate: 1,250 for contractual work</i>		1,250	1,250	1,250	4410800000

FEES, PROFESSIONAL AND OTHER SERVICES

Arts Commission (865-00)

Name of Agency

TYPE OF FEE AND NAME OF VENDOR	Retired w/ PERS	(1) Actual Expenses FY Ending June 30, 2024	(2) Estimated Expenses FY Ending June 30, 2025	(3) Requested Expenses FY Ending June 30, 2026	Fund Source
TONYA HAYS/arts education consultant <i>Comp. Rate: 675 for contractual work</i>		675	675	675	4410800000
TONYA HAYS/arts education consultant <i>Comp. Rate: 537 for contractual work</i>		538	538	538	4410800000
TONYA HAYS/arts education consultant <i>Comp. Rate: 612 for contractual work</i>		613	613	613	4410800000
TONYA HAYS/arts education consultant <i>Comp. Rate: 793 for contractual work</i>		794	794	794	4410800000
TONYA HAYS/arts education consultant <i>Comp. Rate: 556 for contractual work</i>		556	556	556	4410800000
Tonya Hays/Summer Institute Presenter <i>Comp. Rate: 394 for contractual work</i>		394			4410800000
VICTORIA DUGGER/grant panelist <i>Comp. Rate: 250 for contractual work</i>		250	250	250	2286500000
VIRGINIA BRICK VPB ENTERTAINMENT/state arts conference <i>Comp. Rate: 500 for contractual work</i>		500	500	500	5386500000
Website Developer/website work <i>Comp. Rate: 50000 per contract</i>				50,000	2286500000
WELLS & COMPANY, LLC THE TELL AGENCY/advertiser <i>Comp. Rate: 2,200 for contractual work</i>		2,200	2,200	2,200	2286500000
WELLS & COMPANY, LLC THE TELL AGENCY/arts education <i>Comp. Rate: 2,500 for contractual work</i>		2,500	2,500	2,500	4410800000
Whole Schools - after school coordinator/project coordinator <i>Comp. Rate: 30000 per contract</i>			30,000	30,000	4410800000
Whole Schools - community connection coordinator/project <i>Comp. Rate: 30000 per contract</i>			15,000	15,000	4410800000
Whole Schools - curriculum manager/project management <i>Comp. Rate: 30000 per contract</i>			15,000	15,000	4410800000
Whole Schools - media services/media services <i>Comp. Rate: 28248 per contract</i>			28,248	28,248	4410800000
Whole Schools - model school coordinator stipend/project <i>Comp. Rate: 1000 per stipend</i>			15,000	15,000	4410800000
Whole Schools - model school presenters/presenters <i>Comp. Rate: 2500 per contract</i>			15,000	15,000	4410800000
Whole Schools - presenters at institutes/presenters <i>Comp. Rate: 1500 to 5000 per contract</i>			65,500	65,500	4410800000
Whole Schools - research assistant/project assistance <i>Comp. Rate: 10000 per contract</i>			10,000	10,000	4410800000
Whole Schools - research coordinator/research <i>Comp. Rate: 30000 per contract</i>			15,000	15,000	4410800000
Whole Schools - school project coordinator stipends/project <i>Comp. Rate: 1500 per stipend</i>			10,000	10,000	4410800000
Whole Schools - teaching artist presenters/presentations <i>Comp. Rate: 5000 per contract</i>			15,000	15,000	4410800000
Whole Schools - teaching artist residencies/artist residencies <i>Comp. Rate: 7500 per contract</i>			50,000	50,000	4410800000

FEES, PROFESSIONAL AND OTHER SERVICES

Arts Commission (865-00)

Name of Agency _____

TYPE OF FEE AND NAME OF VENDOR	Retired w/ PERS	(1) Actual Expenses FY Ending June 30, 2024	(2) Estimated Expenses FY Ending June 30, 2025	(3) Requested Expenses FY Ending June 30, 2026	Fund Source
Whole Schools - teaching artist team leader/project coordinator <i>Comp. Rate: 30000 per contract</i>			30,000	30,000	4410800000
Whole Schools - teaching artist trainers/training <i>Comp. Rate: 5000 per contract</i>			15,000	15,000	4410800000
Year End Contractual Work/year end contractual work <i>Comp. Rate: 21050 for contractual work</i>		21,050			2286500000
Total 61690000 Fees and Services		746,186	1,118,038	1,161,038	

61695000 Prof Fees Travel 1099

100 HML LLC HOLIDAY INN MERIDIAN/hotel rooms for <i>Comp. Rate: 4726 for contractual work</i>		4,726	4,726	4,726	4410800000
ACTME LLC/arts education consultant <i>Comp. Rate: 762 for contractual work</i>		762	762	762	4410800000
ACTME LLC/arts education consultant <i>Comp. Rate: 90 for contractual work</i>		90	90	90	4410800000
ACTME LLC/arts education consultant <i>Comp. Rate: 376 for contractual work</i>		376	376	376	4410800000
ACTME LLC/arts education consultant <i>Comp. Rate: 221 for contractual work</i>		221	221	221	4410800000
ACTME LLC/arts education consultant <i>Comp. Rate: 37 for contractual work</i>		37	37	37	4410800000
AMBER MARIA COBBINS/arts education consultant <i>Comp. Rate: 213 for contractual work</i>		213	213	213	4410800000
ANDREA SCHIPKE/arts education consultant <i>Comp. Rate: 107 for contractual work</i>		107	107	107	4410800000
ANDREA SCHIPKE/arts education consultant <i>Comp. Rate: 96 for contractual work</i>		96	96	96	3386500000
ANQUANIZIA HALL/arts education consultant <i>Comp. Rate: 335 for contractual work</i>		335	335	335	4410800000
ANQUANIZIA HALL/arts education consultant <i>Comp. Rate: 76 for contractual work</i>		76	76	76	4410800000
ANQUANIZIA HALL/arts education consultant <i>Comp. Rate: 9 for contractual work</i>		9	9	9	4410800000
ANQUANIZIA HALL/arts education consultant <i>Comp. Rate: 217 for contractual work</i>		217	217	217	4410800000
ANQUANIZIA HALL/arts education consultant <i>Comp. Rate: 699 for contractual work</i>		699	699	699	4410800000
ANQUANIZIA HALL/arts education consultant <i>Comp. Rate: 143 for contractual work</i>		143	143	143	4410800000
ANQUANIZIA HALL/arts education consultant <i>Comp. Rate: 77 for contractual work</i>		77	77	77	4410800000
APPLE SEVEN SERVICES SE LP <i>Comp. Rate: 4046 for contractual work</i>		4,046	4,046	4,046	4410800000
APPLE SEVEN SERVICES SE LP <i>Comp. Rate: 2023 for contractual work</i>		2,023	2,023	2,023	4410800000
BIORHYTHMS PUBLISHING LLC/arts education consultant					

FEES, PROFESSIONAL AND OTHER SERVICES

Arts Commission (865-00)

Name of Agency					
TYPE OF FEE AND NAME OF VENDOR	Retired w/ PERS	(1) Actual Expenses FY Ending June 30, 2024	(2) Estimated Expenses FY Ending June 30, 2025	(3) Requested Expenses FY Ending June 30, 2026	Fund Source
<i>Comp. Rate: 1033 for contractual work</i>		1,033	1,033	1,033	3386500000
BOGUS ADVENTURES LLC/hotel rooms for contractors					
<i>Comp. Rate: 1912 for contractual work</i>		1,912	1,912	1,912	2286500000
CAPITAL HOTEL ASSOCIATES LLC THE WESTIN					
<i>Comp. Rate: 1471 for contractual work</i>		1,471	1,471	1,471	2286500000
CAPITAL HOTEL ASSOCIATES LLC THE WESTIN					
<i>Comp. Rate: 700 for contractual work</i>		700	700	700	5386500000
CASEY WATTS/arts education consultant					
<i>Comp. Rate: 563 for contractual work</i>		563	563	563	3386500000
DAMEIN WASH/arts education consultant					
<i>Comp. Rate: 337 for contractual work</i>		337	337	337	4410800000
DELAINEY BOWERS/Poetry Outloud coordinator					
<i>Comp. Rate: 650 for contractual work</i>		650	650	650	5386500000
DISTRICT HOTEL GROUP LLC RESIDENCE INN BY					
<i>Comp. Rate: 232 for contractual work</i>		232	132	132	4410800000
DISTRICT HOTEL GROUP LLC RESIDENCE INN BY					
<i>Comp. Rate: 125 for contractual work</i>		125	125	125	3386500000
DUNCANSON CREATIONS LLC/arts education consultant					
<i>Comp. Rate: 1200 for contractual work</i>		1,200	1,200	1,200	3386500000
EAGLE RIDGE CONF CENTER HINDS COMMUNITY					
<i>Comp. Rate: 1060 for contractual work</i>		1,060	1,060	1,060	4410800000
EAGLE RIDGE CONF CENTER HINDS COMMUNITY					
<i>Comp. Rate: 445 for contractual work</i>		445	445	445	4410800000
ERIN MULLIGAN/arts education consultant					
<i>Comp. Rate: 327 for contractual work</i>		327	327	327	4410800000
ERIN MULLIGAN/arts education consultant					
<i>Comp. Rate: 435 for contractual work</i>		435	435	435	4410800000
ERIN MULLIGAN/arts education consultant					
<i>Comp. Rate: 57 for contractual work</i>		57	57	57	4410800000
ERIN MULLIGAN/arts education consultant					
<i>Comp. Rate: 138 for contractual work</i>		138	138	138	4410800000
ERIN MULLIGAN/arts education consultant					
<i>Comp. Rate: 195 for contractual work</i>		195	196	196	4410800000
ERIN MULLIGAN/arts education consultant					
<i>Comp. Rate: 232 for contractual work</i>		232	232	232	4410800000
Erin Mulligan/arts education consultant					
<i>Comp. Rate: 858 for contractual work</i>		858			4410800000
ERRET JAMES/arts education consultant					
<i>Comp. Rate: 200 for contractual work</i>		200	200	200	4410800000
GAIL MORTON/arts education consultant					
<i>Comp. Rate: 229 for contractual work</i>		229	229	229	3386500000
GAIL MORTON/arts education consultant					
<i>Comp. Rate: 395 for contractual work</i>		395	395	395	4410800000
JAISHRI HOSPITALITY LLC HOLIDAY INN EXPRESS &					
<i>Comp. Rate: 357 for contractual work</i>		357	357	357	4410800000
KATHERINE BROWN/arts education consultant					

FEES, PROFESSIONAL AND OTHER SERVICES

Arts Commission (865-00)

Name of Agency					
TYPE OF FEE AND NAME OF VENDOR	Retired w/ PERS	(1) Actual Expenses FY Ending June 30, 2024	(2) Estimated Expenses FY Ending June 30, 2025	(3) Requested Expenses FY Ending June 30, 2026	Fund Source
<i>Comp. Rate: 608 for contractual work</i> KATHERINE BROWN/arts education consultant		608	608	608	4410800000
<i>Comp. Rate: 295 for contractual work</i> KATHERINE BROWN/arts education consultant		295	295	295	4410800000
<i>Comp. Rate: 141 for contractual work</i> KATHERINE BROWN/arts education consultant		141	141	141	4410800000
<i>Comp. Rate: 72 for contractual work</i> KATHERINE BROWN/arts education consultant		72	72	72	4410800000
<i>Comp. Rate: 90 for contractual work</i> KATHERINE BROWN/Poetry Outloud coordinator		90	90	90	4410800000
<i>Comp. Rate: 291 for contractual work</i> KATHERINE BROWN/Poetry Outloud coordinator		291	291	291	5386500000
<i>Comp. Rate: 1057 for contractual work</i> KATHERINE BROWN/Poetry Outloud coordinator		1,057	1,057	1,057	5386500000
<i>Comp. Rate: 1009 for contractual work</i> KATHERINE BROWN/Poetry Outloud coordinator		1,009	1,009	1,009	5386500000
<i>Comp. Rate: 773 for contractual work</i> KATHERINE BROWN/Poetry Outloud coordinator		773	773	773	5386500000
<i>Comp. Rate: 587 for contractual work</i> KATHERINE BROWN/Poetry Outloud coordinator		587	587	587	5386500000
<i>Comp. Rate: 2571 for contractual work</i> KATHERINE BROWN/Poetry Outloud coordinator		2,571	2,571	2,571	5386500000
<i>Comp. Rate: 165 for contractual work</i> KATHERINE BROWN/Poetry Outloud coordinator		165	165	165	5386500000
<i>Comp. Rate: 389 for contractual work</i> KATHERINE BROWN/Poetry Outloud coordinator		389	389	389	5386500000
<i>Comp. Rate: 285 for contractual work</i> KATHERINE BROWN/Poetry Outloud coordinator		285	285	285	4410800000
<i>Comp. Rate: 445 for contractual work</i> KATHERINE BROWN/Poetry Outloud coordinator		445	445	445	4410800000
<i>Comp. Rate: 452 for contractual work</i> KATHERINE BROWN/Poetry Outloud coordinator		452	452	452	4410800000
<i>Comp. Rate: 971 for contractual work</i> KATHERINE BROWN/Poetry Outloud coordinator		971	971	971	4410800000
<i>Comp. Rate: 79 for contractual work</i> KATHERINE BROWN/Poetry Outloud coordinator		79	79	79	4410800000
<i>Comp. Rate: 102 for contractual work</i> KATHERINE BROWN/Poetry Outloud coordinator		102	102	102	4410800000
<i>Comp. Rate: 470 for contractual work</i> KATHERINE BROWN/Poetry Outloud coordinator		470	470	470	4410800000
<i>Comp. Rate: 79 for contractual work</i> KATHERINE BROWN/Poetry Outloud coordinator		79	79	79	4410800000
<i>Comp. Rate: 331 for contractual work</i> KATHERINE BROWN/Poetry Outloud coordinator		331	331	331	4410800000
<i>Comp. Rate: 141 for contractual work</i> KATHERINE BROWN/Poetry Outloud coordinator		141	141	141	4410800000

FEES, PROFESSIONAL AND OTHER SERVICES

Arts Commission (865-00)

Name of Agency

TYPE OF FEE AND NAME OF VENDOR	Retired w/ PERS	(1) Actual Expenses FY Ending June 30, 2024	(2) Estimated Expenses FY Ending June 30, 2025	(3) Requested Expenses FY Ending June 30, 2026	Fund Source
Comp. Rate: 79 for contractual work LESLIE LEE/arts education consultant		79	79	79	4410800000
Comp. Rate: 483 for contractual work LESLIE LEE/arts education consultant		483	483	483	4410800000
Comp. Rate: 129 for contractual work LODGING AMERICA AT NEW ALBANY LLC HOLIDAY INN		129	129	129	4410800000
Comp. Rate: 1635 for contractual work MARGARET DICKSON/arts education consultant		1,635	1,635	1,635	4410800000
Comp. Rate: 508 for contractual work MATTHEW GRANT/arts education consultant		508	508	508	4410800000
Comp. Rate: 275 for contractual work MEREDITH H GONZALEZFERNANDEZ/arts education		275	275	275	3386500000
Comp. Rate: 162 for contractual work MEREDITH H GONZALEZFERNANDEZ/arts education		162	162	162	4410800000
Comp. Rate: 130 for contractual work MEREDITH H GONZALEZFERNANDEZ/arts education		130	130	130	4410800000
Comp. Rate: 149 for contractual work MEREDITH H GONZALEZFERNANDEZ/arts education		149	149	149	4410800000
Comp. Rate: 59 for contractual work MORGAN KATHRYN BERGERON/arts education consultant		59	59	59	4410800000
Comp. Rate: 422 for contractual work MORGAN KATHRYN BERGERON/arts education consultant		422	422	422	4410800000
Comp. Rate: 445 for contractual work MORGAN KATHRYN BERGERON/arts education consultant		445	445	445	4410800000
Comp. Rate: 518 for contractual work MORGAN KATHRYN BERGERON/arts education consultant		518	518	518	4410800000
Comp. Rate: 460 for contractual work MORGAN KATHRYN BERGERON/arts education consultant		460	460	460	4410800000
Comp. Rate: 212 for contractual work MORGAN KATHRYN BERGERON/arts education consultant		212	212	212	4410800000
Comp. Rate: 256 for contractual work MORGAN KATHRYN BERGERON/arts education consultant		256	256	256	4410800000
Comp. Rate: 448 for contractual work MORGAN KATHRYN BERGERON/arts education consultant		448	448	448	4410800000
Comp. Rate: 904 for contractual work MORGAN KATHRYN BERGERON/arts education consultant		904	904	904	4410800000
Comp. Rate: 408 for contractual work PENNY ANGELA MACK/arts education consultant		408	408	408	4410800000
Comp. Rate: 218 for contractual work PENNY ANGELA MACK/arts education consultant		218	218	218	4410800000
Comp. Rate: 257 for contractual work PENNY ANGELA MACK/arts education consultant		257	257	257	4410800000
Comp. Rate: 118 for contractual work PENNY ANGELA MACK/arts education consultant		118	118	118	4410800000
Comp. Rate: 219 for contractual work PENNY ANGELA MACK/arts education consultant		219	219	219	4410800000

FEES, PROFESSIONAL AND OTHER SERVICES

Arts Commission (865-00)

Name of Agency					
TYPE OF FEE AND NAME OF VENDOR	Retired w/ PERS	(1) Actual Expenses FY Ending June 30, 2024	(2) Estimated Expenses FY Ending June 30, 2025	(3) Requested Expenses FY Ending June 30, 2026	Fund Source
<i>Comp. Rate: 93 for contractual work</i>		93	93	93	4410800000
PENNY ANGELA MACK/arts education consultant					
<i>Comp. Rate: 151 for contractual work</i>		151	151	151	4410800000
PENNY ANGELA MACK/arts education consultant					
<i>Comp. Rate: 148 for contractual work</i>		148	148	148	4410800000
Penny Mack/arts education consultant					
<i>Comp. Rate: 109 for contractual work</i>		109			4410800000
RICHELLE PUTNAM/arts education consultant					
<i>Comp. Rate: 309 for contractual work</i>		309	309	309	4410800000
ROB DETJEN/arts education consultant					
<i>Comp. Rate: 265 for contractual work</i>		265	265	265	4410800000
ROB DETJEN/arts education consultant					
<i>Comp. Rate: 325 for contractual work</i>		325	325	325	4410800000
ROBERTS TERRENCE/arts education consultant					
<i>Comp. Rate: 440 for contractual work</i>		440	440	440	4410800000
ROBERTS TERRENCE/arts education consultant					
<i>Comp. Rate: 206 for contractual work</i>		206	206	206	4410800000
ROBERTS TERRENCE/arts education consultant					
<i>Comp. Rate: 897 for contractual work</i>		897	897	897	4410800000
ROBERTS TERRENCE/arts education consultant					
<i>Comp. Rate: 284 for contractual work</i>		284	284	284	4410800000
ROBERTS TERRENCE/arts education consultant					
<i>Comp. Rate: 673 for contractual work</i>		673	673	673	4410800000
ROBERTS TERRENCE/arts education consultant					
<i>Comp. Rate: 515 for contractual work</i>		515	515	515	4410800000
ROBERTS TERRENCE/arts education consultant					
<i>Comp. Rate: 51 for contractual work</i>		51	51	51	4410800000
ROBERTS TERRENCE/arts education consultant					
<i>Comp. Rate: 133 for contractual work</i>		133	133	133	4410800000
ROBERTS TERRENCE/arts education consultant					
<i>Comp. Rate: 172 for contractual work</i>		172	172	172	4410800000
ROBERTS TERRENCE/arts education consultant					
<i>Comp. Rate: 245 for contractual work</i>		245	245	245	4410800000
SKY ROCKET PRESS/arts education consultant					
<i>Comp. Rate: 194 for contractual work</i>		194	194	194	3386500000
SMYTH LAKE CO INC LAKE TIAKOKHATA RESORT/arts					
<i>Comp. Rate: 1319 for contractual work</i>		1,319	1,319	1,319	4410800000
STACY HOWELL/arts education consultant					
<i>Comp. Rate: 651 for contractual work</i>		651	651	651	4410800000
STACY HOWELL/arts education consultant					
<i>Comp. Rate: 383 for contractual work</i>		383	383	383	4410800000
STACY HOWELL/arts education consultant					
<i>Comp. Rate: 1016 for contractual work</i>		1,016	1,016	1,016	4410800000
STACY HOWELL/arts education consultant					
<i>Comp. Rate: 1037 for contractual work</i>		1,037	1,037	1,037	4410800000
STACY HOWELL/arts education consultant					

FEES, PROFESSIONAL AND OTHER SERVICES

Arts Commission (865-00)

Name of Agency

TYPE OF FEE AND NAME OF VENDOR	Retired w/ PERS	(1) Actual Expenses FY Ending June 30, 2024	(2) Estimated Expenses FY Ending June 30, 2025	(3) Requested Expenses FY Ending June 30, 2026	Fund Source
<i>Comp. Rate: 1231 for contractual work</i> STACY HOWELL/arts education consultant		1,231	1,231	1,231	4410800000
<i>Comp. Rate: 127 for contractual work</i> STACY HOWELL/arts education consultant		127	127	127	4410800000
<i>Comp. Rate: 792 for contractual work</i> STACY HOWELL/arts education consultant		792	792	792	4410800000
<i>Comp. Rate: 269 for contractual work</i> STACY HOWELL/arts education consultant		269	269	269	4410800000
<i>Comp. Rate: 161 for contractual work</i> STACY HOWELL/arts education consultant		161	162	162	4410800000
<i>Comp. Rate: 581 for contractual work</i> Stacy Howell/arts education consultant		581	581	581	4410800000
<i>Comp. Rate: 1954 for contractual work</i> STACY HOWELL/arts education consultant		1,954			4410800000
<i>Comp. Rate: 472 for contractual work</i> STACY HOWELL/arts education consultant		472	472	472	4410800000
<i>Comp. Rate: 178 for contractual work</i> STACY HOWELL/arts education consultant		178	178	178	4410800000
<i>Comp. Rate: 60 for contractual work</i> TEXARKANA REGIONAL ARTS & HUMANITIES		60	60	60	4410800000
<i>Comp. Rate: 2066 for contractual work</i> TEXARKANA REGIONAL ARTS & HUMANITIES		2,066	2,066	2,066	4410800000
<i>Comp. Rate: 921 for contractual work</i> TONYA HAYS/arts education consultant		921	921	921	4410800000
<i>Comp. Rate: 394 for contractual work</i> TONYA HAYS/arts education consultant		394	394	394	4410800000
<i>Comp. Rate: 89 for contractual work</i> TONYA HAYS/arts education consultant		89	89	89	4410800000
<i>Comp. Rate: 534 for contractual work</i> TONYA HAYS/arts education consultant		534	534	534	4410800000
<i>Comp. Rate: 181 for contractual work</i> TONYA HAYS/arts education consultant		181	181	181	4410800000
<i>Comp. Rate: 160 for contractual work</i> TONYA HAYS/arts education consultant		160	160	160	4410800000
<i>Comp. Rate: 269 for contractual work</i> TONYA HAYS/arts education consultant		269	269	269	4410800000
<i>Comp. Rate: 181 for contractual work</i> TONYA HAYS/arts education consultant		181	181	181	4410800000
<i>Comp. Rate: 181 for contractual work</i> TONYA HAYS/arts education consultant		181	181	181	4410800000
<i>Comp. Rate: 180 for contractual work</i> TUPELO HOTEL GROUP LLC/hotel rooms for contractors		180	180	180	4410800000
<i>Comp. Rate: 480 for contractual work</i>		480	480	480	4410800000
Total 61695000 Prof Fees Travel 1099		68,378	65,359	65,359	

FEES, PROFESSIONAL AND OTHER SERVICES

Arts Commission (865-00)

Name of Agency

TYPE OF FEE AND NAME OF VENDOR	Retired w/ PERS	(1) Actual Expenses FY Ending June 30, 2024	(2) Estimated Expenses FY Ending June 30, 2025	(3) Requested Expenses FY Ending June 30, 2026	Fund Source
61696000 Prof Fees Travel Non-1099					
Capital Hotel Associates, Westin Jackson/GAA Hotel					
<i>Comp. Rate: State Reimbursement Rate</i>		2,835	2,835	2,835	2286500000
James Inabinet/Board Presentation					
<i>Comp. Rate: State Travel Fees</i>		54	54	54	4410800000
Total 61696000 Prof Fees Travel Non-1099		2,889	2,889	2,889	
61625000 Contract Worker Payroll Matching					
Intern/Database work					
<i>Comp. Rate:</i>		1,498			2286500000
Total 61625000 Contract Worker Payroll Matching		1,498			
GRAND TOTAL		846,134	1,188,136	1,231,136	

VEHICLE PURCHASE DETAILS

Arts Commission (865-00)

Name of Agency

Year	Model	Person(s) Assigned To	Vehicle Purpose/Use	Replacement Or New?	FY2026 Req. Cost
-------------	--------------	------------------------------	----------------------------	--------------------------------	-----------------------------

TOTAL VEHICLE REQUEST

**VEHICLE INVENTORY
AS OF JUNE 30, 2024**

Arts Commission (865-00)

Name of Agency

Vehicle Type	Vehicle Description	Model Year	Model	Person(s) Assigned To	Purpose/Use	Tag Number	Mileage on 6-30-2024	Average Miles per Year	Replacement Proposed	
									FY2025	FY2026

**VEHICLE POOL MEMBER LIST
2026 BUDGET REQUEST**

Arts Commission (865-00)

Name of Agency

N/A

**PRIORITY OF DECISION UNITS
FISCAL YEAR 2026**

Arts Commission (865-00)

Name of Agency

Program	Decision Unit	Object	Amount
Priority # 1			
Program # 1: Grants			
Increase for the Building Fund for the Arts grant program			
		Subsidies	2,217,600
		Totals	<u>2,217,600</u>
		State Support Special Funds	2,217,600
Program # 2: Information & Technical Assistance			
Increase for the Building Fund for the Arts grant program			
		Subsidies	554,400
		Totals	<u>554,400</u>
		State Support Special Funds	554,400
Priority # 2			
Program # 1: Grants			
Increase for grant funds			
		Subsidies	264,956
		Totals	<u>264,956</u>
		General Funds	264,956
Program # 2: Information & Technical Assistance			
Increase for grant funds			
		Subsidies	66,239
		Totals	<u>66,239</u>
		General Funds	66,239
Priority # 3			
Program # 1: Grants			
Increase in funds and salary authority for new position and realignment			
		Salaries	67,734
		Totals	<u>67,734</u>
		General Funds	67,734
Program # 2: Information & Technical Assistance			
Increase in funds and salary authority for position realignment			
		Salaries	16,934
		Totals	<u>16,934</u>
		General Funds	16,934
Priority # 4			
Program # 1: Grants			
Increase for website redesign			
		Contractual	40,000

**PRIORITY OF DECISION UNITS
FISCAL YEAR 2026**

Arts Commission (865-00)

Name of Agency

Program	Decision Unit	Object	Amount
		Totals	40,000
		General Funds	40,000
Program # 2: Information & Technical Assistance			
	Increase for website redesign		
		Contractual	10,000
		Totals	10,000
		General Funds	10,000
Priority # 5			
Program # 1: Grants			
	Use of Capital Expense Funds for BFA administrative costs		
		Contractual	22,400
		Totals	22,400
		State Support Special Funds	22,400
Program # 2: Information & Technical Assistance			
	Use of Capital Expense Funds for BFA administrative costs		
		Contractual	5,600
		Totals	5,600
		State Support Special Funds	5,600
Priority # 6			
Program # 1: Grants			
	Reduction in contractual paid with general funds		
		Contractual	(28,000)
		Totals	(28,000)
		State Support Special Funds	(28,000)
Program # 2: Information & Technical Assistance			
	Reduction in contractual paid with general funds		
		Contractual	(7,000)
		Totals	(7,000)
		State Support Special Funds	(7,000)
Priority # 7			
Program # 1: Grants			
	Increase in grants paid through state support special funds		
		Subsidies	28,000
		Totals	28,000
		State Support Special Funds	28,000

**PRIORITY OF DECISION UNITS
FISCAL YEAR 2026**

Arts Commission (865-00)

Name of Agency

Program	Decision Unit	Object	Amount
Program # 2: Information & Technical Assistance			
Increase in grants paid through state support special funds			
		Subsidies	7,000
		Totals	7,000
		State Support Special Funds	7,000

CAPITAL LEASES

Arts Commission (865-00)

Name of Agency

VENDOR/ ITEM LEASED	Original Date of Lease	Original No. of Months of Lease	No. of Months Remaining on 6-30-24	Last Payment Date	Interest Rate	Amount of Each Payment			Total of Payments To Be Made													
						Actual FY 2024			Estimated FY 2025			Requested FY 2026										
						Principal	Interest	Total	Principal	Interest	Total	Principal	Interest	Total								

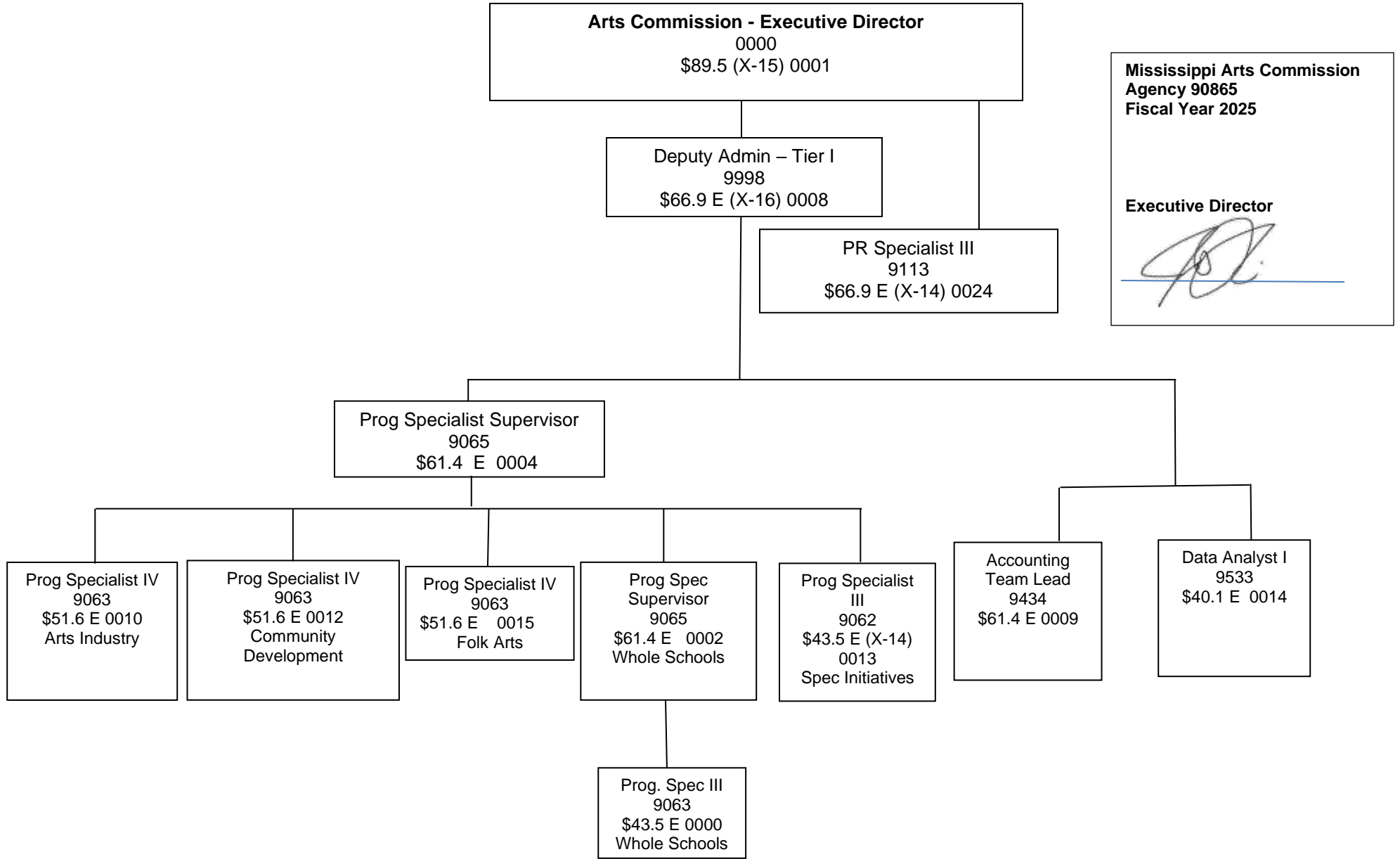
Summary of 3% General Fund Program Reduction to FY 2025 Appropriated Funding by Major Object

Arts Commission (865-00)

Name of Agency

Major Object	FY2025 General Fund Reduction	EFFECT ON FY2025 STATE SUPPORT SPECIAL FUNDS	EFFECT ON FY2025 FEDERAL FUNDS	EFFECT ON FY2025 OTHER SPECIAL FUNDS	TOTAL 3% REDUCTIONS
SALARIES, WAGES, FRINGE					
TRAVEL	(2,334)				(2,334)
CONTRACTUAL	(35,002)				(35,002)
COMMODITIES	(9,334)				(9,334)
OTHER THAN EQUIPMENT					
EQUIPMENT					
VEHICLES					
WIRELESS COMM. DEVS.					
SUBSIDIES, LOANS, ETC					
TOTALS	(46,670)				(46,670)

Mississippi Arts Commission Organizational Chart



Agency Revenue Source Report - FY2024 Data

As Required by HB 831, 2015 Legislative Session

And SB 2387, 2016 Legislative Session

***PLEASE COMPLETE PAGE 2**

Agency Name	Arts Commission
Agency LBO Number	865-00
Budget Year	2024

State Support Sources

General Funds

Amount Received
\$ 1,528,431.00

State Support Special Funds

- Education Enhancement Funds
- Health Care Expendable Funds
- Tobacco Control Funds
- Capital Expense Funds
- Working Cash Reserve Funds
- BP Settlement Fund
- Gulf Coast Restoration Fund
- Coronavirus SFR Fund
- Coronavirus SFR Lost Revenue Fund

Amount Received
\$ 1,490,000.00
\$ -
\$ -
\$ 7,477,372.00
\$ -
\$ -
\$ -
\$ -
\$ -

List all Federal Funds at its most specific level, such as an office or division, include name of grant, grantor, not the federal department.

Federal Funds

Fund Name	Fund Number	Action or results promised in order to receive funds	Amount Received	FY End Balance
Federal Fund #1	5386500000	support of arts activities	\$ 1,007,300.00	\$ 29,150.00
Federal Fund #2			\$ -	\$ -
Federal Fund #3			\$ -	\$ -
Federal Fund #4			\$ -	\$ -

Description of any Maintenance of Effort agreements entered into with any federal agency or subdivision thereof

Add Rows for Additional Federal Funds

Budgeted Special Funds

Fund Name	Fund Number	Created in Statute or by Agency?	Statute Fund Created	Amount Received	FY End Balance
Special Fund #1	3386500000	agency		\$ 67,880.00	\$ 295,859.00
Special Fund #2				\$ -	\$ -
Special Fund #3				\$ -	\$ -
Special Fund #4				\$ -	\$ -

Total Special Fund Revenue	\$ 67,880.00
----------------------------	--------------

Add Rows for Additional Special Funds

Revenue from Tax, Fine or Fee Assessed

Name of Assessment

Fund Deposited:

Amount Assessed
 Amount Collected
 Authority to Collect (Code Section)
 Method of Determining Assessment
 Method of Collection
 Amt. & Purpose for which Expended

Purpose

\$	-
\$	-

Amount
\$ -
\$ -
\$ -

Amount Transferred to General Fund
 Authority for Transfer to General Fund
 Amount Transferred to Other Entity
 Authority for Transfer to Other Entity
 Name of Other Entity

\$	-
\$	-

Name of Assessment

Fund Deposited:

Amount Assessed
 Amount Collected
 Authority to Collect (Code Section)
 Method of Determining Assessment
 Method of Collection
 Amt. & Purpose for which Expended

Purpose

\$	-
\$	-

Amount
\$ -
\$ -
\$ -

Amount Transferred to General Fund
 Authority for Transfer to General Fund
 Amount Transferred to Other Entity
 Authority for Transfer to Other Entity
 Name of Other Entity

\$	-
\$	-

Add Rows for Additional Revenue from Tax, Fine or Fee Assessed

Additional Fund Data Including Non-Budgeted Funds

Please include all funds held within MAGIC

#	Fund Name	Fund Number	Created in Statute or by Agency?	MS Code that created Fund	Are there Fund Restrictions? (Y/N)	List Fund Restrictions and/or MS Code Section	Does the Fund Collect Interest? (Y/N)	Interest Collected	Is the Interest Retained or Transferred?	If Interest is Transferred	
										Fund Name	Fund Number
1	Whole Schools	3386500000	agency		N		N	\$ -			
2	Events and programming	3386700000	agency		N		N	\$ -			
3	Misc Fund	3386800000	agency		N		N	\$ -			
4	Education Enhancement Fund	4410800000	statute	N/A	Y	For Whole Schools Initiative and Arts Education	N	\$ -			
5	Federal COVID relief	5820186500	agency	N/A	Y	For COVID relief activities	N	\$ -			
6	Capital Expense Fund	6493400000	statute	N/A	Y	For Building Fund for the Arts grant program	N	\$ -			

Can any of the funds be closed or combined with another fund?

Closed fund: If applicable complete the following:

#	Fund Name Closing	Fund Number Closing	Reason the fund(s) can be Closed?	Code Section(s) to be Amended or Repealed?
1	Building Fund for the Arts 1	6387500000	This fund was established for earlier Building Fund program when it was funded via bond funds. No longer active. We had requested this closed in the past.	
2	Building Fund for the Arts 2	6387600000	This fund was established for earlier Building Fund program when it was funded via bond funds. No longer active. We had requested this closed in the past.	
3				

Combined funds: If applicable complete the following:

#	Fund Name Closing	Fund Number Closing	Fund Name Combined with	Fund Number Combined with	Code Section(s) to be Amended or Repealed?	Reason the fund(s) can be Combined?	Code Section(s) to be Amended or Repealed?
1							
2							
3							

Does the agency have a fund created by legislation without an associated fund created in the State Treasury?

If applicable complete the following:

#	Code Section	Name of Fund	Reason the fund was not created?	Can the Code Section(s) be Repealed?
1				
2				
3				