

GUSTAV KLIMT'S TREE OF LIFE

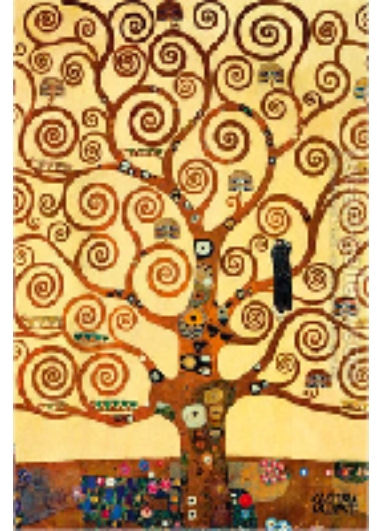
BACKGROUND information about "The Tree of Life":

Gustav Klimt painted the "Tree of Life" which is an important symbol in nearly every culture. The Tree of Life represents wisdom, protection, strength, and beauty. It reaches up into the sky and down into the earth. It links Heaven, Earth, and the Underworld. The swirled branches make people want to keep looking at the painting to explore and find more. Even with the mixed up patterns and swirly branches we still will always recognize it as The Tree of Life.



MEET the artist
GUSTAV KLIMT: Gustav Klimt

was an Austrian painter (born in 1862, died in 1918) and the founder of the school of painting known as the Vienna Sezession. Klimt's early work was rather realistic in nature. Much of the paintings he did prior to 1898 were large murals commissioned by theaters. Later in his life, Klimt began to paint in a much more innovative and imaginative way until eventually his creations were very decorative and quite symbolic – meaning that many of the images in his work had hidden meaning.



MCCR Arts Learning Standards: VA:Cr1.1.1, VA:Cr2.1.1, VA:Pr5.1.1

The Process:

The teacher will discuss Gustav Klimt and his artwork and life. The students will view a picture of Klimt's painting, "Tree of Life." The teacher will discuss the Tree of Life symbol and what it represents. Students will tear sheets of tissue paper into smaller pieces. They will cover their sheet of white paper with tissue paper. The students will use glue to stick the tissue paper to their white paper being careful to make sure the tissue paper is smooth. Encourage students to lay one piece of tissue paper down at a time. When filled, let the papers dry. Students will paint a "Y" shape on the middle of their tissue paper collages using black paint. They can then add swirls to the ends of the "Y". They will be encouraged to look at Klimt's original painting and then add more swirls to their trees.. Finally, sequins can be added to embellish the tree.

