

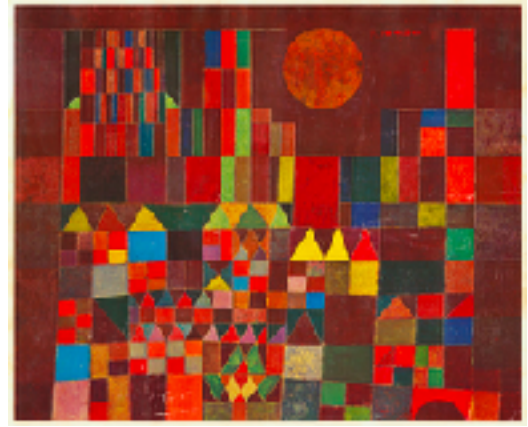
Paul Klee - Stained Glass Cities to Make 10!

Topic: Paul Klee's artwork and How to make 10 using shapes



Meet the Artist:

Paul Klee was a Swiss and German artist best known for his large body of work, influenced by cubism, expressionism and surrealism. When he was very young he trained to be a violinist. Then he



decided to become an artist. Klee made over 10,000 paintings, drawings, and etchings in his lifetime. His works are held in museums all over the world.

The Process:

Students studied the artwork of Paul Klee. They discussed the shapes, lines, and colors they saw in the painting, "Castle and the Sun." Students drew four buildings using lines to create rectangle or square shapes. The students have been learning how to make 10 in math. They have used counters to make 10 prior to this lesson. Students were asked to make 10 using squares or circles for their windows in two of the buildings. After the teacher checked their first two buildings the students used squares or circles to make 10 in the next two buildings. The students then traced their buildings and windows with a sharpie on a transparency sheet. The students used tempera paint to paint the windows first and then painted their buildings on the transparency sheet. After they were done they held their artwork up to the window to see the stained glass effect the paint had on the transparency sheet.

Visual Art Vocabulary:

Trace
Shape

Temper Paint

Horizontal

Vertical

Stained Glass

MCCR Arts Learning Standards

MCCR Math Standards

VA:Cr1.2.K, VA:Cr2.2.K, VA:Pr5.1.K

K.CC.5, K.CC.6

